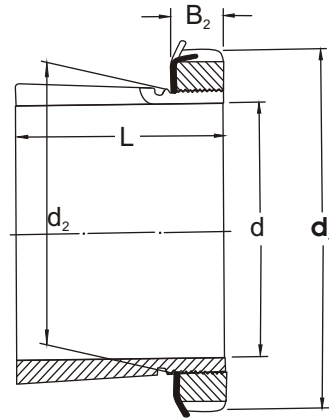
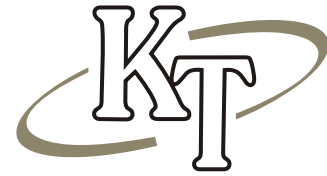


Adapter Sleeves

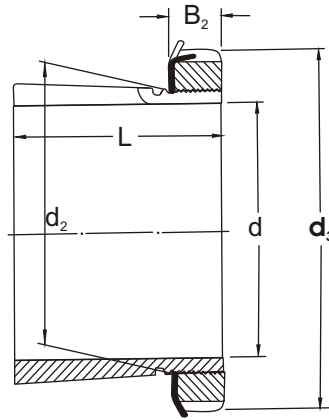
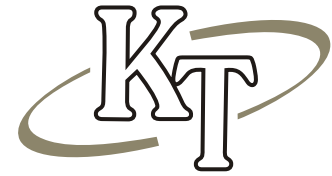


TAPER 1:12

H HE HA HS	d				L	d ₃	B ₂	d ₂ METRIC THREADS	LOCK NUT	LOCKING DEVICE	WEIGHT Kg
	H mm	HE in	HS in	HA in							
H 204	17	—	—	—	24	32	7	20 X 1	KM 04	MB 04	0.041
H 205	20	3/4	7/8	—	26	38	8	25 X 1.5	KM 05	MB 05	0.070
H 206	25	1	7/8	15/16	27	45	8	30 X 1.5	KM 06	MB 06	0.099
H 207	30	—	1 1/8	1 3/16	29	52	9	35 X 1.5	KM 07	MB 07	0.125
H 208	35	1 1/4	1 3/8	1 5/16	31	58	10	40 X 1.5	KM 08	MB 08	0.174
H 209	40	1 1/2	1 5/8	1 7/16	33	65	11	45 X 1.5	KM 09	MB 09	0.227
H 210	45	1 3/4	1 5/8	1 11/16	35	70	12	50 X 1.5	KM 10	MB 10	0.274
H 211	50	2	1 7/8	1 15/16	37	75	12	55 X 2	KM 11	MB 11	0.308
H 212	55	—	2 1/8	—	38	80	13	60 X 2	KM 12	MB 12	0.346
H 213	60	2 1/4	2 3/8	2 3/16	40	85	14	65 X 2	KM 13	MB 13	0.401
H 214	60	—	—	—	41	92	14	70 X 2	KM 14	MB 14	0.593
H 215	65	2 1/2	—	2 7/16	43	98	15	75 X 2	KM 15	MB 15	0.707
H 216	70	2 3/4	—	2 11/16	46	105	17	80 X 2	KM 16	MB 16	0.882
H 217	75	3	—	2 15/16	50	110	18	85 X 2	KM 17	MB 17	1.020
H 218	80	—	—	3 3/16	52	120	18	90 X 2	KM 18	MB 18	1.190
H 219	85	3 1/4	—	—	55	125	19	95 X 2	KM 19	MB 19	1.370
H 220	90	3 1/2	—	3 7/16	58	130	20	100 X 2	KM 20	MB 20	1.490
H 221	95	—	—	—	60	140	20	105 X 2	KM 21	MB 21	1.720
H 222	100	4	—	3 15/16	63	145	21	110 X 2	KM 22	MB 22	1.930

1. KT adapter sleeves are supplied complete with Lock nut and Locking device

Adapter Sleeves

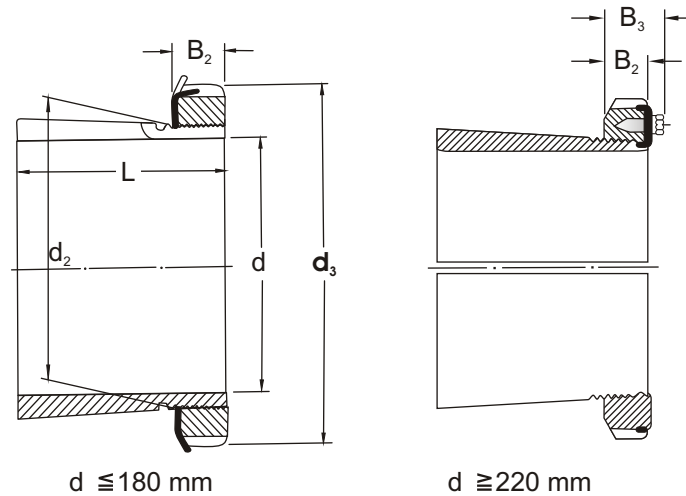
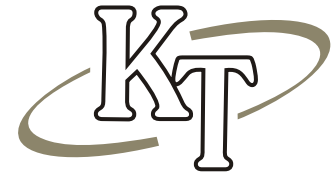


TAPER 1:12

H HE HA HS	d				L	d ₃	B ₂	d ₂ METRIC THREADS	LOCK NUT	LOCKING DEVICE	WEIGHT Kg
	H mm	HE in	HS in	HA in							
H 304	17	—	—	—	28	32	7	20 X 1	KM 04	MB 04	0.045
H 305	20	3/4	7/8	—	29	38	8	25 X 1.5	KM 05	MB 05	0.075
H 306	25	1	7/8	15/16	31	45	8	30 X 1.5	KM 06	MB 06	0.109
H 307	30	—	1 1/8	1 3/16	35	52	9	35 X 1.5	KM 07	MB 07	0.142
H 308	35	1 1/4	1 3/8	1 5/16	36	58	10	40 X 1.5	KM 08	MB 08	0.189
H 309	40	1 1/2	1 5/8	1 7/16	39	65	11	45 X 1.5	KM 09	MB 09	0.248
H 310	45	1 3/4	1 5/8	1 11/16	42	70	12	50 X 1.5	KM 10	MB 10	0.303
H 311	50	2	1 7/8	1 15/16	45	75	12	55 X 2	KM 11	MB 11	0.345
H 312	55	—	2 1/8	—	47	80	13	60 X 2	KM 12	MB 12	0.394
H 313	60	2 1/4	2 3/8	2 3/16	50	85	14	65 X 2	KM 13	MB 13	0.458
H 314	60	—	—	—	52	92	14	70 X 2	KM 14	MB 14	0.723
H 315	65	2 1/2	—	2 7/16	55	98	15	75 X 2	KM 15	MB 15	0.831
H 316	70	2 3/4	—	2 11/16	59	105	17	80 X 2	KM 16	MB 16	1.030
H 317	75	3	—	2 15/16	63	110	18	85 X 2	KM 17	MB 17	1.180
H 318	80	—	—	3 3/16	65	120	18	90 X 2	KM 18	MB 18	1.370
H 319	85	3 1/4	—	—	68	125	19	95 X 2	KM 19	MB 19	1.560
H 320	90	3 1/2	—	3 7/16	71	130	20	100 X 2	KM 20	MB 20	1.690
H 321	95	—	—	—	74	140	20	105 X 2	KM 21	MB 21	1.950
H 322	100	4	—	3 15/16	77	145	21	110 X 2	KM 22	MB 22	2.180

1. KT adapter sleeves are supplied complete with Lock nut and Locking device

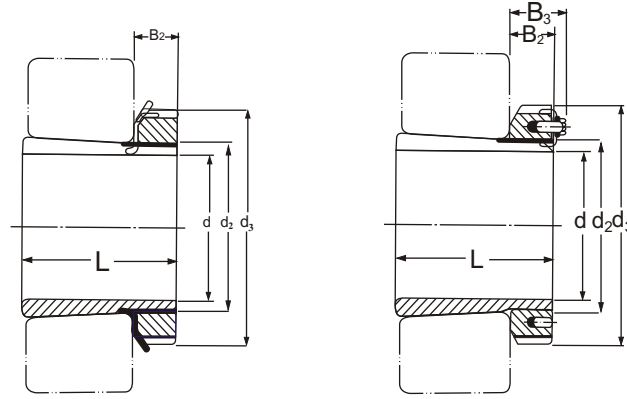
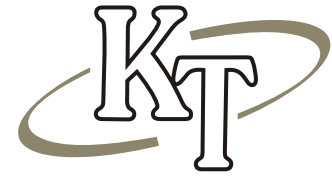
Adapter Sleeves



H HE HA HS	d				L mm	d ₃ mm	B ₂ mm	d ₂ METRIC THREADS mm	LOCK NUT	LOCKING DEVICE	WEIGHT Kg
	H mm	HE in	HS in	HA in							
H 2304	17	—	—	—	31	32	7	20 X 1	KM 04	MB 04	0.049
H 2305	20	3/4	—	—	35	38	8	25 X 1.5	KM 05	MB 05	0.087
H 2306	25	1	—	—	38	45	8	30 X 1.5	KM 06	MB 06	0.126
H 2307	30	—	—	—	43	52	9	35 X 1.5	KM 07	MB 07	0.165
H 2308	35	1 1/4	1 3/8	—	46	58	10	40 X 1.5	KM 08	MB 08	0.224
H 2309	40	1 1/2	—	1 7/16	50	65	11	45 X 1.5	KM 09	MB 09	0.280
H 2310	45	1 3/4	1 5/8	1 11/16	55	70	12	50 X 1.5	KM 10	MB 10	0.362
H 2311	50	2	1 7/8	1 15/16	59	75	12	55 X 2	KM 11	MB 11	0.420
H 2312	55	—	2 1/8	—	62	80	13	60 X 2	KM 12	MB 12	0.481
H 2313	60	2 1/4	2 3/8	2 3/16	65	85	14	65 X 2	KM 13	MB 13	0.557
H 2314	60	—	—	—	68	92	14	70 X 2	KM 14	MB 14	0.897
H 2315	65	2 1/2	—	2 7/16	73	98	15	75 X 2	KM 15	MB 15	1.050
H 2316	70	2 3/4	—	2 11/16	78	105	17	80 X 2	KM 16	MB 16	1.280
H 2317	75	3	—	2 15/16	82	110	18	85 X 2	KM 17	MB 17	1.450
H 2318	80	—	—	3 3/16	86	120	18	90 X 2	KM 18	MB 18	1.690
H 2319	85	3 1/4	—	—	90	125	19	95 X 2	KM 19	MB 19	1.920
H 2320	90	3 1/2	—	3 7/16	97	130	20	100 X 2	KM 20	MB 20	2.150
H 2321	95	—	—	—	101	140	20	105 X 2	KM 21	MB 21	2.460
H 2322	100	4	—	3 15/16	105	145	21	110 X 2	KM 22	MB 22	2.740
H 2324	110	4 1/4	—	4 3/16	112	155	22	120 X 2	KM 24	MB 24	3.190
H 2326	115	4 1/2	—	4 7/16	121	165	23	130 X 2	KM 26	MB 26	4.600

1. KT adapter sleeves are supplied complete with Lock nut and Locking device

Adapter Sleeves



$d \leq 180 \text{ mm}$

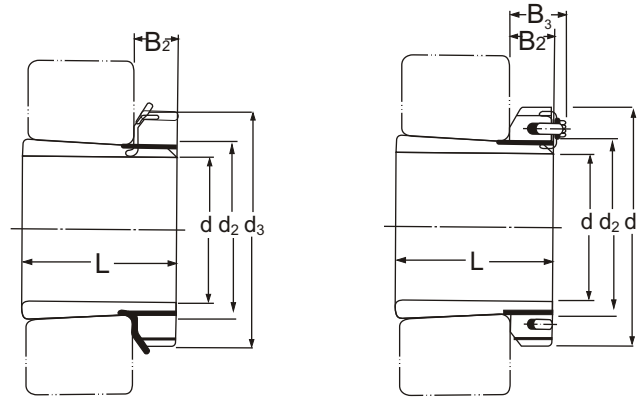
$d \geq 200 \text{ mm}$

TAPER 1:12

H HE HA HS	d				L	d ₃	B ₂	d ₂ METRIC THREADS	LOCK NUT	LOCKING DEVICE AND LOCK PLATES	WEIGHT KG
	H mm	HE in	HS in	HA in							
H 2328	125	5	—	4 ¹⁵ / ₁₆	131	180	24	140 X 2	KM 28	MB 28	5.550
H 2330	135	5 ¼	—	5 ³ / ₁₆	139	195	26	150 X 2	KM 30	MB 30	6.630
H 2332	140	5 ½	—	5 ⁷ / ₁₆	147	210	28	160 X 3	KM 32	MB 32	9.140
H 2334	150	6	—	5 ¹⁵ / ₁₆	154	220	29	170 X 3	KM 34	MB 34	10.200
H 2336	160	6 ½	—	6 ⁷ / ₁₆	161	230	30	180 X 3	KM 36	MB 36	11.300
H 2338	170	6 ¾	—	6 ¹⁵ / ₁₆	169	240	31	190 X 3	KM 38	MB 38	12.600
H 2340	180	7	—	7 ³ / ₁₆	176	250	32	200 X 3	KM 40	MB 40	13.900
H 2344	200	—	—	—	183	280	32	Tr 220 X 4	HM 3144	MB 44	16.700
H 2348	220	—	—	—	196	300	34	Tr 240 X 4	HM 3148	MB 48	19.700
H 2352	240	—	—	—	208	330	36	Tr 260 X 4	HM 3152	MB 52	24.200
H 2356	260	—	—	—	221	350	38	Tr 280 X 4	HM 3156	MB 56	27.800

1. KT adapter sleeves are supplied complete with Lock nut and Locking device

Adapter Sleeves



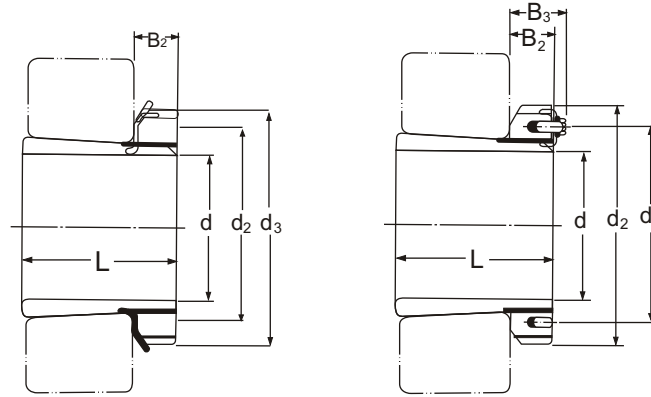
$d \leq 180 \text{ mm}$

$d \geq 200 \text{ mm}$

H HE HA	d			L	d ₃	B ₂	B ₃	d ₂ METRIC THREADS	LOCK NUT	LOCKING DEVICE AND LOCK PLATES	WEIGHT KG
	H mm	HE in	HA in								
H 3024	110	4 1/4	4 3/16	72	145	22	—	120 X 2	KML 24	MBL 24	1.930
H 3026	115	4 1/2	4 7/16	80	155	23	—	130 X 2	KML 26	MBL 26	2.850
H 3028	125	5	4 15/16	82	165	24	—	140 X 2	KML 28	MBL 28	3.160
H 3030	135	5 1/4	5 3/16	87	180	26	—	150 X 2	KML 30	MBL 30	3.890
H 3032	140	5 1/2	5 7/16	93	190	28	—	160 X 2	KML 32	MBL 32	5.210
H 3034	150	6	5 15/16	101	200	29	—	170 X 3	KML 34	MBL 34	5.990
H 3036	160	6 1/2	6 7/16	109	210	30	—	180 X 3	KML 36	MBL 36	6.830
H 3038	170	6 3/4	6 15/16	112	220	31	—	190 X 3	KML 38	MBL 38	7.450
H 3040	180	7	7 3/16	120	240	32	—	200 X 3	KML 40	MBL 40	9.190
H 3044	200	—	7 15/16	128	260	30	41	Tr 220 X 4	HM3044	MS30 / 44	10.300
H 3048	220	—	8 15/16	133	290	34	46	Tr 240 X 4	HM3048	MS30 / 48	13.200
H 3052	240	—	9 7/16	147	310	34	46	Tr 260 X 4	HM3052	MS30 / 52	15.300
H 3056	260	—	10 7/16	152	330	38	50	Tr 280 X 4	HM3056	MS30 / 56	17.700
H 3060	280	—	10 15/16	168	360	42	54	Tr 300 X 4	HM3060	MS30 / 60	22.800
H 3064	300	—	11 15/16	171	380	42	55	Tr 320 X 5	HM3064	MS30 / 64	24.600
H 3068	320	—	12 7/16	187	400	45	58	Tr 340 X 5	HM3068	MS30 / 68	28.700
H 3072	340	—	13 7/16	188	420	45	58	Tr 360 X 5	HM3072	MS30 / 72	30.500
H 3076	360	—	13 15/16	193	450	48	62	Tr 380 X 5	HM3076	MS30 / 76	35.800
H 3080	380	—	—	210	470	52	66	Tr 400 X 5	HM3080	MS30 / 80	41.300
H 3084	400	—	—	212	490	52	66	Tr 420 X 5	HM3084	MS30 / 84	43.700
H 3088	410	—	—	228	520	60	77	Tr 440 X 5	HM3088	MS30 / 88	65.200
H 3092	430	—	—	234	540	60	77	Tr 460 X 5	HM3092	MS30 / 92	69.500
H 3096	450	—	—	237	560	60	77	Tr 480 X 5	HM3096	MS30 / 96	73.300
H 30 / 500	470	—	—	247	580	68	85	Tr 500 X 5	HM30/500	MS30 / 500	81.800

1. KT adapter sleeves are supplied complete with Lock nut and Locking device

Adapter Sleeves



$d \leq 180 \text{ mm}$

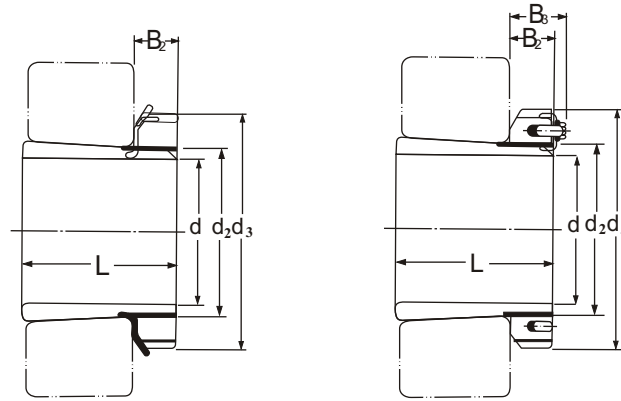
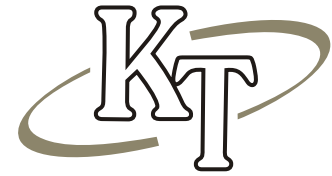
$d \geq 200 \text{ mm}$

TAPER 1:12

H HE HA	d			L	d ₃	B ₂	B ₃	d ₂ METRIC THREADS	LOCK NUT	LOCKING DEVICE AND LOCK PLATES	WEIGHT KG
	H mm	HE in	HA in								
H 3120	90	3 1/2	3 7/16	76	130	20	—	100 X 2	KM 20	MB 20	1.800
H 3122	100	4	3 15/16	81	145	21	—	110 X 2	KM 22	MB 22	2.250
H 3124	110	4 1/4	4 3/16	88	155	22	—	120 X 2	KM 24	MB 24	2.640
H 3126	115	4 1/2	4 7/16	92	165	23	—	130 X 2	KM 26	MB 26	3.660
H 3128	125	5	4 15/16	97	180	24	—	140 X 2	KM 28	MB 28	4.340
H 3130	135	5 1/4	5 3/16	111	195	26	—	150 X 2	KM 30	MB 30	5.520
H 3132	140	5 1/2	5 7/16	119	210	28	—	160 X 3	KM 32	MB 32	7.670
H 3134	150	6	5 15/16	122	220	29	—	170 X 3	KM 34	MB 34	8.380
H 3136	160	6 1/2	6 7/16	131	230	30	—	180 X 3	KM 36	MB 36	9.500
H 3138	170	6 3/4	6 15/16	141	240	31	—	190 X 3	KM 38	MB 38	10.800
H 3140	180	7	7 3/16	150	250	32	—	200 X 3	KM 40	MB 40	12.100
H 3144	200	—	7 15/16	158	280	32	44	Tr 220 X 4	HM3144	MB 44	14.700
H 3148	220	—	—	169	300	34	46	Tr 240 X 4	HM3148	MB 48	17.300
H 3152	240	—	—	187	330	36	49	Tr 260 X 4	HM3152	MB 52	22.000
H 3156	260	—	—	192	350	38	51	Tr 280 X 4	HM3156	MB 56	24.500
H 3160	280	—	—	208	380	40	53	Tr 300 X 4	HM3160	MS31 / 60	30.200
H 3164	300	—	—	226	400	42	56	Tr 320 X 5	HM3164	MS31 / 64	34.900
H 3168	320	—	—	254	440	55	72	Tr 340 X 5	HM3168	MS31 / 68	49.500
H 3172	340	—	—	259	460	58	75	Tr 360 X 5	HM3172	MS31 / 72	54.200
H 3176	360	—	—	264	490	60	77	Tr 380 X 5	HM3176	MS31 / 76	61.700
H 3180	380	—	—	272	520	62	82	Tr 400 X 5	HM3180	MS31 / 80	70.600
H 3184	400	—	—	304	540	70	90	Tr 420 X 5	HM3184	MS31 / 84	84.200
H 3188	410	—	—	307	560	70	90	Tr 440 X 5	HM3188	MS31 / 88	104.000
H 3192	430	—	—	326	580	75	95	Tr 460 X 5	HM3192	MS31 / 92	116.000
H 3196	450	—	—	335	620	75	95	Tr 480 X 5	HM3196	MS31 / 96	133.000
H31/500	470	—	—	356	630	80	100	Tr 500 X 5	HM31/500	MS31 / 500	143.000

1. KT adapter sleeves are supplied complete with Lock nut and Locking device

Adapter Sleeves



$d \leq 180 \text{ mm}$

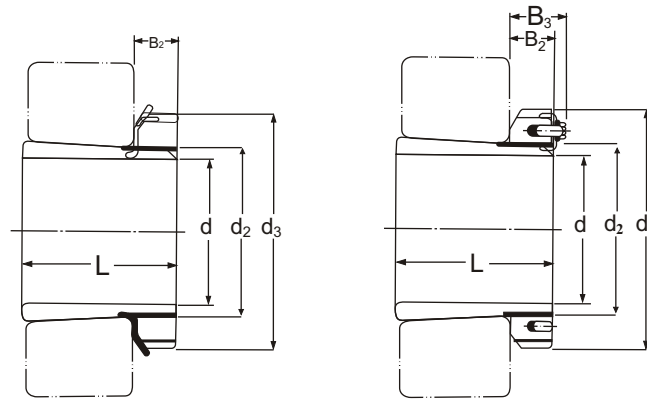
$d \geq 200 \text{ mm}$

TAPER 1:12

H	d mm	L mm	d ₃ mm	B ₂ mm	B ₃ mm	d ₂ METRIC THREADS	LOCK NUT	LOCK PLATES	WEIGHT KG
H 3260	280	240	380	40	53	Tr 300x4	HM3160	MS31 / 60	34.100
H 3264	300	258	400	42	56	Tr 320x5	HM3164	MS31 / 64	39.300
H 3268	320	288	440	55	72	Tr 340x5	HM3168	MS31 / 68	54.600
H 3272	340	299	460	58	75	Tr 360x5	HM3172	MS31 / 72	60.200
H 3276	360	310	490	60	77	Tr 380x5	HM3176	MS31 / 76	69.600
H 3280	380	328	520	62	82	Tr 400x5	HM3180	MS31 / 80	81.000
H 3284	400	352	540	70	90	Tr 420x5	HM3184	MS31 / 84	94.000
H 3288	410	361	560	70	90	Tr 440x5	HM3188	MS31 / 88	118.000
H 3292	430	382	580	75	95	Tr 460x5	HM3192	MS31 / 92	132.000
H 3296	450	397	620	75	95	Tr 480x5	HM3196	MS31 / 96	152.000
H 32/500	470	428	630	80	100	Tr 500x5	HM31/500	MS31 / 500	166.000

1. KT adapter sleeves are supplied complete with Lock nut and Locking device

Adapter Sleeves



$d \leq 180 \text{ mm}$

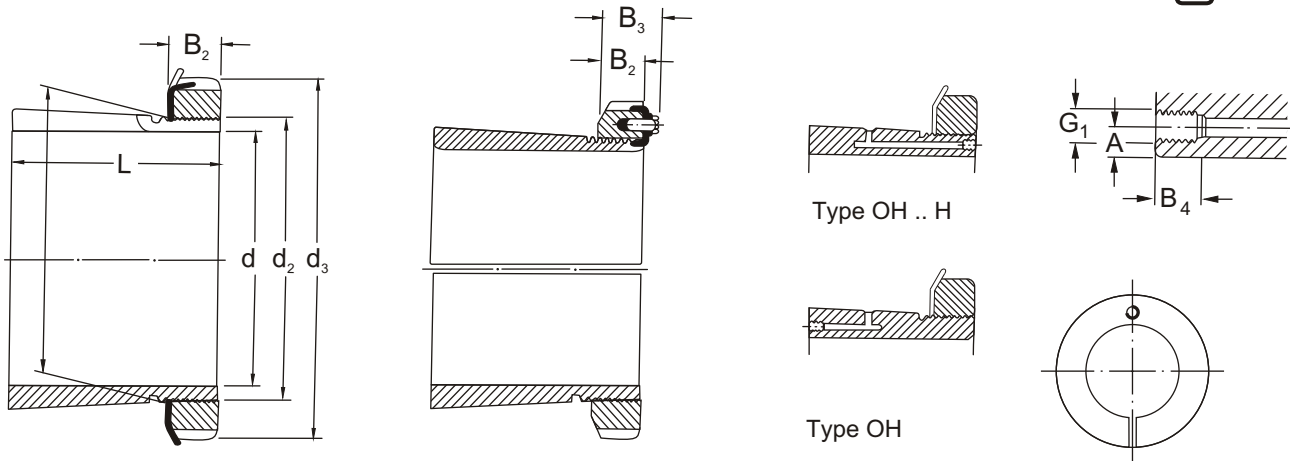
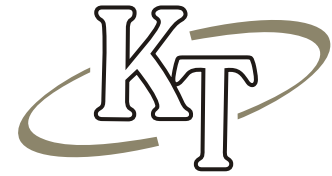
$d \geq 200 \text{ mm}$

TAPER 1:12

H	d mm	L mm	d ₃ mm	B ₂ mm	B ₃ mm	d ₂ METRIC THREADS	LOCK NUT	LOCKING DEVICE & PLATES	WEIGHT Kg
H 3936	160	87	210	29.5	—	180X3	KML 36	MBL 36	5.700
H 3938	170	89	220	30.5	—	190X3	KML 38	MBL 38	6.190
H 3940	180	98	240	31.5	—	200X3	KML 40	MBL 40	7.890
H 3944	200	96	260	30	41	Tr 220X4	HM3044	MS30/ 44	8.160
H 3948	220	101	290	34	46	Tr 240X4	HM3048	MS30/ 48	10.700
H 3952	240	116	310	34	46	Tr 260X4	HM3052	MS30/ 52	12.800
H 3956	260	121	330	38	50	Tr 280X4	HM3056	MS30/ 56	14.800
H 3960	280	140	360	42	54	Tr 300X4	HM3060	MS30/ 60	19.800
H 3964	300	140	380	42	55	Tr 320X5	HM3064	MS30/ 64	21.000
H 3968	320	144	400	45	58	Tr 340X5	HM3068	MS30/ 68	23.500
H 3972	340	144	420	45	58	Tr 360X5	HM3072	MS30/ 72	24.500
H 3976	360	164	450	48	62	Tr 380X5	HM3076	MS30/ 76	31.500
H 3980	380	168	470	52	66	Tr 400X5	HM3080	MS30/ 80	35.000
H 3984	400	168	490	52	66	Tr 420X5	HM3084	MS30/ 84	36.600
H 3988	410	189	520	60	77	Tr 440X5	HM3088	MS30/ 88	57.300
H 3992	430	189	540	60	77	Tr 460X5	HM3092	MS30/ 92	59.900
H 3996	450	200	560	60	77	Tr 480X5	HM3096	MS30/ 96	64.900
H 39/500	470	208	580	68	85	Tr 500X5	HM30/500	MS30/ 500	73.100

1. KT adapter sleeves are supplied complete with Lock nut and Locking device

Adapter Sleeves



$d \leq 180 \text{ mm}$

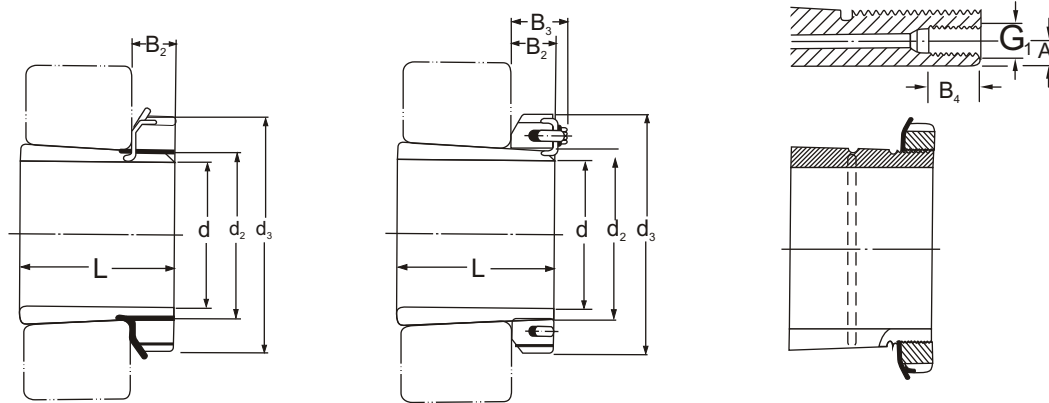
$d \geq 200 \text{ mm}$

HOH 23 Hydraulic Adapter Sleeves No.	d	L	d ₃	B ₂	B ₃	G ₁	A	B ₄	LOCK NUT	LOCK PLATES	METRIC THREADS d ₂	WEIGHT Kg
HOH 2332	140	147	210	28	—	M6	4.0	7	KM 32	MB 32	160X3	9.140
HOH 2334	150	154	220	29	—	M6	4.0	7	KM 34	MB 34	170X3	10.200
HOH 2336	160	161	230	30	—	M6	4.0	7	KM 36	MB 36	180X3	11.300
HOH 2338	170	169	240	31	—	M6	4.0	7	KM 38	MB 38	190X3	12.600
HOH 2340	180	176	250	32	—	M6	4.0	7	KM 40	MB 40	200X3	13.900
HOH 2344	200	183	280	32	44	M6	4.0	7	HML 44	MB 44	Tr 220X4	16.700
HOH 2348	220	196	300	34	46	M6	4.0	7	HML 48	MB 48	Tr 240X4	19.700
HOH 2352	240	208	330	36	49	M6	4.0	7	HML 52	MB 52	Tr 260X4	24.200
HOH 2356	260	221	350	38	51	M6	4.0	7	HML 56	MB 56	Tr 280X4	27.800

HOH 32 Hydraulic Adapter Sleeves No.	d	L	d ₃	B ₂	B ₃	G ₁	A	B ₄	LOCK NUT	LOCK PLATES	METRIC THREADS d ₂	WEIGHT Kg
HOH 3260	280	240	380	40	53	M6	4.0	7	HM31 60	MS31/60	Tr 300X4	34.100
HOH 3264	300	258	400	42	56	M6	3.5	7	HM31 64	MS31/64	Tr 320X5	39.300
HOH 3268	320	288	440	55	72	M6	3.5	7	HM31 68	MS31/68	Tr 340X5	54.600
HOH 3272	340	299	460	58	75	M6	3.5	7	HM31 72	MS31/72	Tr 360X5	60.200
HOH 3276	360	310	490	60	77	M6	3.5	7	HM31 76	MS31/76	Tr 380X5	39.600
HOH 3280	380	328	520	62	82	M6	3.5	7	HM31 80	MS31/80	Tr 400X5	81.000
HOH 3284	400	352	540	70	90	M6	3.5	7	HM31 84	MS31/84	Tr 420X5	94.000
HOH 3288	410	361	560	70	90	M8	6.5	12	HM31 88	MS31/88	Tr 440X5	118.000
HOH 3292	430	382	580	75	95	M8	6.5	12	HM31 92	MS31/92	Tr 460X5	132.000
HOH 3296	450	397	620	75	95	M8	6.5	12	HM31 96	MS31/96	Tr 480X5	152.000
HOH 32/500	470	428	630	80	100	M8	6.5	12	HM31 500	MS31/500	Tr 500X5	166.000

1. KT adapter sleeves are supplied complete with Lock nut and Locking device

Adapter Sleeves



$d \leq 180 \text{ mm}$

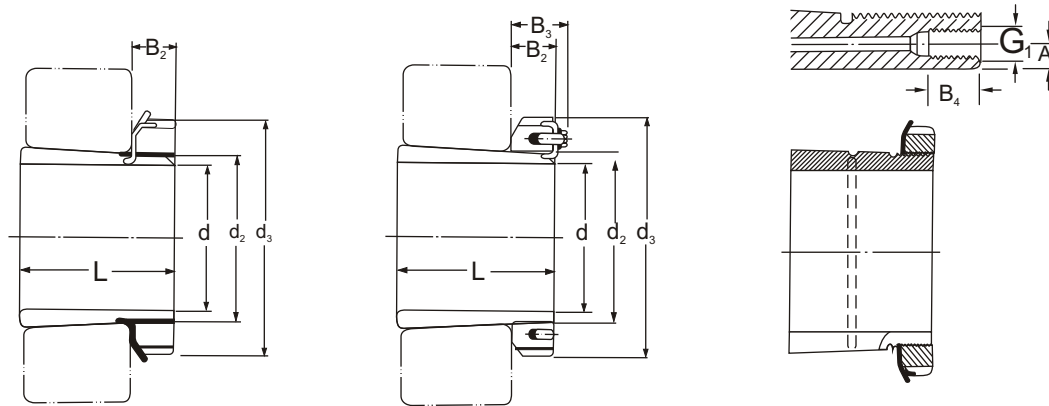
$d \geq 200 \text{ mm}$

TAPER 1:12

HOH 30 Hydraulic Adapter Sleeves No.	d mm	L mm	d ₃ mm	B ₂ mm	B ₃ mm	G ₁ mm	A mm	B ₄ mm	d ₂ METRIC THREADS mm	LOCK NUT	LOCK PLATES	WEIGHT Kg
HOH 3032	140	93	190	28	—	M6	4.0	7	160X3	KML 32	MBL 32	5.210
HOH 3034	150	101	200	29	—	M6	4.0	7	170X3	KML 34	MBL 34	5.990
HOH 3036	160	109	210	30	—	M6	4.0	7	180X3	KML 36	MBL 36	6.830
HOH 3038	170	112	220	31	—	M6	4.0	7	190X3	KML 38	MBL 38	7.450
HOH 3040	180	120	240	32	—	M6	4.0	7	200X3	KML 40	MBL 40	9.190
HOH 3044	200	128	260	30	41	M6	4.0	7	Tr 220X4	HM3044	MS30/44	10.300
HOH 3048	220	133	290	34	46	M6	4.0	7	Tr 240X4	HM3048	MS30/48	13.200
HOH 3052	240	147	310	34	46	M6	4.0	7	Tr 260X4	HM3052	MS30/52	15.300
HOH 3056	260	152	330	38	50	M6	4.0	7	Tr 280X4	HM3056	MS30/56	17.700
HOH 3060	280	168	360	42	54	M6	4.0	7	Tr 300X4	HM3060	MS30/60	22.800
HOH 3064	300	171	380	42	55	M6	3.5	7	Tr 320X5	HM3064	MS30/64	24.600
HOH 3068	320	187	400	45	58	M6	3.5	7	Tr 340X5	HM3068	MS30/68	28.700
HOH 3072	340	188	420	45	58	M6	3.5	7	Tr 360X5	HM3072	MS30/72	30.500
HOH 3076	360	193	450	48	62	M6	3.5	7	Tr 380X5	HM3076	MS30/76	35.800
HOH 3080	380	210	470	52	66	M6	3.5	7	Tr 400X5	HM3080	MS30/80	41.300
HOH 3084	400	212	490	52	66	M6	3.5	7	Tr 420X5	HM3084	MS30/84	43.700
HOH 3088	410	228	520	60	77	M8	6.5	12	Tr 440X5	HM3088	MS30/88	65.200
HOH 3092	430	234	540	60	77	M8	6.5	12	Tr 460X5	HM3092	MS30/92	69.500
HOH 3096	450	237	560	60	77	M8	6.5	12	Tr 480X5	HM3096	MS30/96	73.300
HOH 30/500	470	247	580	68	85	M8	6.5	12	Tr 500X5	HM30500	MS30/500	81.800

1. KT Hydraulic adapter sleeves are supplied complete with Lock nut and Locking device

Adapter Sleeves



$d \leq 180 \text{ mm}$

$d \geq 200 \text{ mm}$

TAPER 1:12

HOH 31 Hydraulic Adapter Sleeves No.	d	L	d ₃	B ₂	B ₃	G ₁	A	B ₄	LOCK NUT	LOCK PLATES	METRIC THREADS d ₂ mm	WEIGHT KG
	mm	mm	mm	mm	mm	mm	mm	mm				
HOH 3132	140	119	210	28	—	M6	4.0	7	KM 32	MB 32	160X3	7.670
HOH 3134	150	122	220	29	—	M6	4.0	7	KM 34	MB 34	170X3	8.380
HOH 3136	160	131	230	30	—	M6	4.0	7	KM 36	MB 36	180X3	9.500
HOH 3138	170	141	240	31	—	M6	4.0	7	KM 38	MB 38	190X3	10.800
HOH 3140	180	150	250	32	—	M6	4.0	7	KM 40	MB 40	200X3	12.100
HOH 3144	200	158	280	32	44	M6	4.0	7	HM3144	MB 44	Tr 220X4	14.700
HOH 3148	220	169	300	34	46	M6	4.0	7	HM3148	MB 48	Tr 240X4	17.300
HOH 3152	240	187	330	36	49	M6	4.0	7	HM3152	MB 52	Tr 260X4	22.000
HOH 3156	260	192	350	38	51	M6	4.0	7	HM3156	MB 56	Tr 280X4	24.500
HOH 3160	280	208	380	40	53	M6	4.0	7	HM3160	MS31/60	Tr 300X4	30.200
HOH 3164	300	226	400	42	56	M6	3.5	7	HM3164	MS31/64	Tr 320X5	34.900
HOH 3168	320	254	440	55	72	M6	3.5	7	HM3168	MS31/68	Tr 340X5	49.500
HOH 3172	340	259	460	58	75	M6	3.5	7	HM3172	MS31/72	Tr 360X5	54.200
HOH 3176	360	264	490	60	77	M6	3.5	7	HM3176	MS31/76	Tr 380X5	61.700
HOH 3180	380	272	520	62	82	M6	3.5	7	HM3180	MS31/80	Tr 400X5	70.600
HOH 3184	400	304	540	70	90	M6	3.5	7	HM3184	MS31/84	Tr 420X5	84.200
HOH 3188	410	307	560	70	90	M8	6.5	12	HM3188	MS31/88	Tr 440X5	104.000
HOH 3192	430	326	580	75	95	M8	6.5	12	HM3192	MS31/92	Tr 460X5	116.000
HOH 3196	450	335	620	75	95	M8	6.5	12	HM3196	MS31/96	Tr 480X5	133.000
HOH 31/500	470	356	630	80	100	M8	6.5	12	HM31/500	MS31/500	Tr 500X5	143.000

1. KT Hydraulic adapter sleeves are supplied complete with Lock nut and Locking device