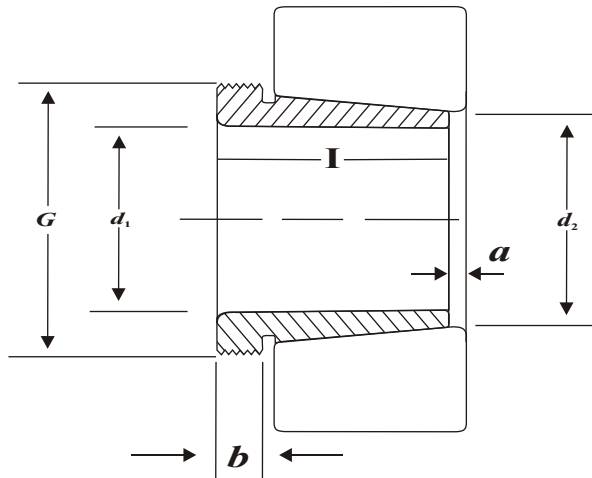


# Withdrawal Sleeves



## AH 2

TAPER 1:12

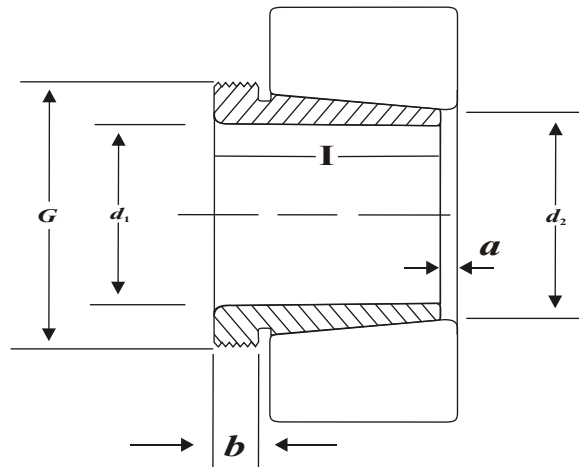
AH 2	d <sub>1</sub> mm	d <sub>2</sub> mm	I mm	a mm	G mm	b mm	Suitable Withdrawal Nut No.	Weight Kg.
AH 208	35	40	25	2	M 45 x 1.5	6	KM 09	0.081
AH 209	40	45	26	3	M 50 x 1.5	6	KM 10	0.095
AH 210	45	50	28	3	M 55 x 2	7	KM 11	0.114
AH 211	50	55	29	3	M 60 x 2	7	KM 12	0.132
AH 212	55	60	32	3	M 65 x 2	8	KM 13	0.161
AH 213	60	65	32.5	4	M 75 x 2	8	KM 15	0.213
AH 214	65	70	33.5	4	M 80 x 2	8	KM 16	0.240
AH 215	70	75	34.5	4	M 85 x 2	8	KM 17	0.259
AH 216	75	80	35.5	4	M 90 x 2	8	KM 18	0.284
AH 217	80	85	38.5	4	M 95 x 2	9	KM 19	0.314
AH 218	85	90	40	4	M 100 x 2	9	KM 20	0.351
AH 219	90	95	43	4	M 105 x 2	10	KM 21	0.403
AH 220	95	100	45	4	M 110 x 2	10	KM 22	0.481
AH 222	105	110	50	4	M 120 x 2	11	KM 24	0.547

## AH 22

TAPER 1:12

AH 22	d <sub>1</sub> mm	d <sub>2</sub> mm	I mm	a mm	G mm	b mm	Suitable Withdrawal Nut No.	Weight Kg.
AH 2236	170	180	105	5	M 200 x 3	17	KM 40	3.730
AH 2238	180	190	112	5	M 210 x 4	18	HM 42T	4.250
AH 2240	190	200	118	5	M 220 x 4	19	HM 44T	4.680
AH 2244	200	220	130	6	M 240 x 4	20	HM 48T	9.100
AH 2248	220	240	144	6	M 260 x 4	21	HM 52T	11.100
AH 2252	240	260	155	6	M 290 x 4	23	HM 58T	14.000
AH 2256	260	280	155	8	M 310 x 5	24	HM 62T	15.200
AH 2260	280	300	170	8	M 330 x 5	26	HM 66T	18.100
AH 2264	300	320	180	10	M 350 x 5	27	HM 70T	20.200

# Withdrawal Sleeves



## AH 3

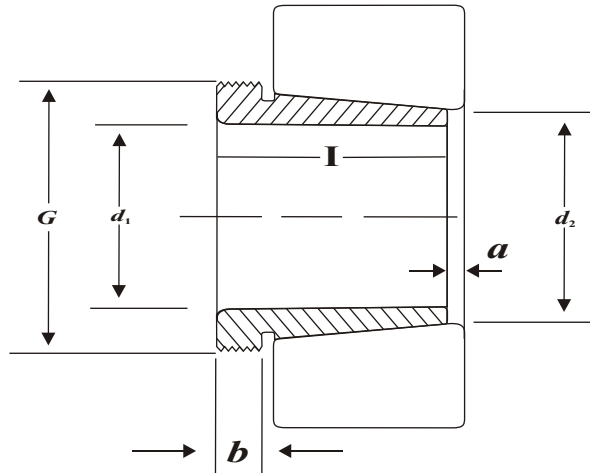
TAPER 1:12

AH 3	d <sub>1</sub> mm	d <sub>2</sub> mm	I mm	a mm	G mm	b mm	Suitable Withdrawal Nut No.	Weight Kg.
AH 308	35	40	29	3	M 45 x 1.5	6	KM 09	0.090
AH 309	40	45	31	3	M 50 x 1.5	6	KM 10	0.109
AH 310	45	50	35	3	M 60 x 2	7	KM 12	0.160
AH 311	50	55	37	3	M 65 x 2	7	KM 13	0.190
AH 312	55	60	40	3	M 70 x 2	8	KM 14	0.220
AH 313	60	65	42	3	M 75 x 2	8	KM 15	0.253
AH 314	65	70	43	4	M 80 x 2	8	KM 16	0.280
AH 315	70	75	45	4	M 85 x 2	8	KM 17	0.313
AH 316	75	80	48	4	M 90 x 2	8	KM 18	0.365
AH 317	80	85	52	4	M 100 x 2	9	KM 20	0.480
AH 318	85	90	53	4	M 105 x 2	9	KM 21	0.520
AH 319	90	95	57	4	M 110 x 2	10	KM 22	0.590
AH 320	95	100	59	4	M 115 x 2	10	KM 23	0.660
AH 322	100	110	63	4	M 130 x 2	12	KM 26	1.260

## AHX 3

AHX 3	d <sub>1</sub> mm	d <sub>2</sub> mm	I mm	a mm	G mm	b mm	Suitable Withdrawal Nut No.	Weight Kg.
AHX 310	45	50	35	3	M 55 x 2	7	KM 11	0.131
AHX 311	50	55	37	3	M 60 x 2	7	KM 12	0.161
AHX 312	55	60	40	3	M 65 x 2	8	KM 13	0.189
AHX 317	80	85	52	4	M 95 x 2	9	KM 19	0.429
AHX 318	85	90	53	4	M 100 x 2	9	KM 20	0.461
AHX 319	90	95	57	4	M 105 x 2	10	KM 21	0.532
AHX 320	95	100	59	4	M 110 x 2	10	KM 22	0.582
AHX 322	105	110	63	4	M 120 x 2	12	KM 24	0.663

# Withdrawal Sleeves



## AH 23

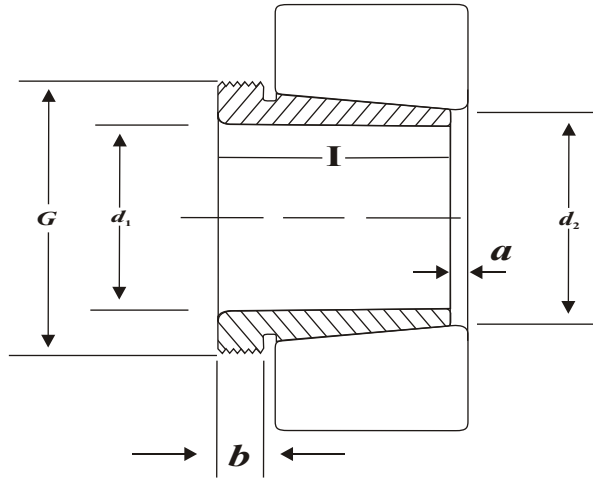
TAPER 1:12

AH 23	d <sub>1</sub> mm	d <sub>2</sub> mm	L mm	a mm	G mm	b mm	Suitable Withdrawal Nut No.	Weight Kg.
AH 2308	35	40	40	3	M 45 x 1.5	7	KM 09	0.128
AH 2309	40	45	44	3	M 50 x 1.5	7	KM 10	0.164
AH 2310	45	50	50	3	M 55 x 2	9	KM 11	0.209
AH 2311	50	55	54	3	M 60 x 2	10	KM 12	0.253
AH 2312	55	60	58	3	M 65 x 2	11	KM 13	0.297
AH 2313	60	65	61	3	M 75 x 2	12	KM 15	0.395
AH 2314	65	70	64	4	M 80 x 2	12	KM 16	0.466
AH 2315	70	75	68	4	M 85 x 2	12	KM 17	0.534
AH 2316	75	80	71	4	M 90 x 2	12	KM 18	0.597
AH 2317	80	85	74	4	M 95 x 2	13	KM 19	0.670
AH 2318	85	90	79	4	M 100 x 2	14	KM 20	0.779
AH 2319	90	95	85	4	M 105 x 2	16	KM 21	0.886
AH 2320	95	100	90	4	M 110 x 2	16	KM 22	0.998
AH 2322	105	110	98	4	M 125 x 2	16	KM 25	1.350
AH 2324	115	120	105	4	M 135 x 2	17	KM 27	1.600
AH 2326	125	130	115	4	M 145 x 2	19	KM 29	1.970
AH 2328	135	140	125	5	M 155 x 2	20	KM 29	2.330
AH 2330	145	150	135	5	M 165 x 2	24	KM 31	2.820
AH 2332	150	160	140	6	M 180 x 2	24	KM 33	4.720
AH 2334	160	170	146	6	M 190 x 2	24	KM 38	5.250
AH 2336	170	180	154	6	M 200 x 2	26	KM 40	5.830
AH 2338	180	190	160	7	M 210 x 2	26	HM 42 T	6.630
AH 2340	190	200	170	7	M 220 x 2	30	HM 44 T	7.540
AH 2344	200	220	181	8	M 240 x 2	30	HM 48 T	13.500
AH 2348	220	240	189	8	M 260 x 2	30	HM 52 T	15.500
AH 2352	240	260	205	8	M 290 x 2	30	HM 58 T	19.600
AH 2356	260	280	212	8	M 310 x 2	30	HM 62 T	21.600

\* M means metric thread.

\* Tr means trapezoid thread.

# Withdrawal Sleeves

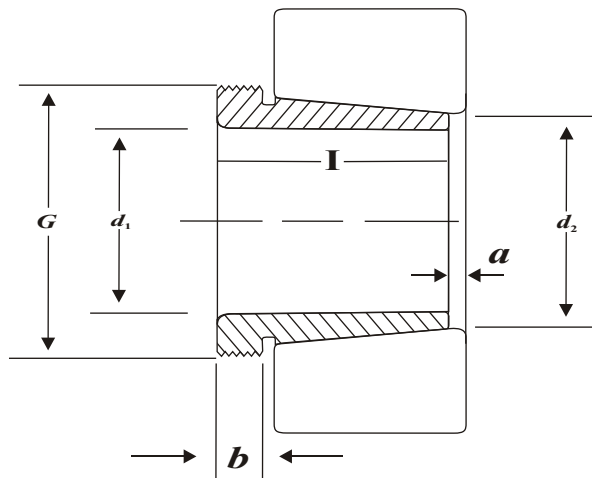


## AH 30

TAPER 1:12

AH30	d <sub>1</sub> mm	d <sub>2</sub> mm	L mm	a mm	G mm	b mm	Suitable Withdrawal Nut No.	Weight Kg.
AHX 3024	115	120	60	4	M 130 x 2	13	KM 26	0.750
AHX 3026	125	130	67	4	M 140 x 2	14	KM 28	0.930
AHX 3028	135	140	68	5	M 150 x 2	14	KM 30	1.010
AHX 3030	145	150	72	5	M 160 x 3	15	KM 32	1.150
AH 3034	150	160	77	5	M 170 x 3	16	KM 34	2.060
AH 3036	160	170	85	5	M 180 x 3	17	KM 36	2.430
AH 3038	170	180	92	6	M 190 x 3	17	KM 38	2.810
AH 3040	180	190	96	6	M 205 x 4	18	HML 41 T	3.320
AH 3044	190	200	102	6	M 215 x 4	19	HML 43T	3.800
AH 3048	200	220	111	6	M 235 x 4	20	HML 47 T	7.400
AH 3052	20	240	116	7	M 260 x 4	21	HML 52 T	8.750
AH 3056	240	260	128	7	M 280 x 4	23	HML 56 T	10.700
AH 3056	260	280	131	8	M 300 x 4	24	HM 3060	12.000
AH 3060	280	300	145	8	M 320 x 5	26	HM 3064	14.400
AH 3064	300	320	149	8	M 345 x 5	27	HML 69 T	16.000
AH 3068	320	340	162	9	M 365 x 5	28	HML 73 T	19.500
AH 3072	340	360	167	9	M 385 x 5	30	HML 77 T	21.000
AH 3076	360	380	170	10	M 410 x 5	31	HML 82 T	23.200
AH 3080	380	400	183	10	M 430 x 5	33	HML 86 T	27.300

# Withdrawal Sleeves

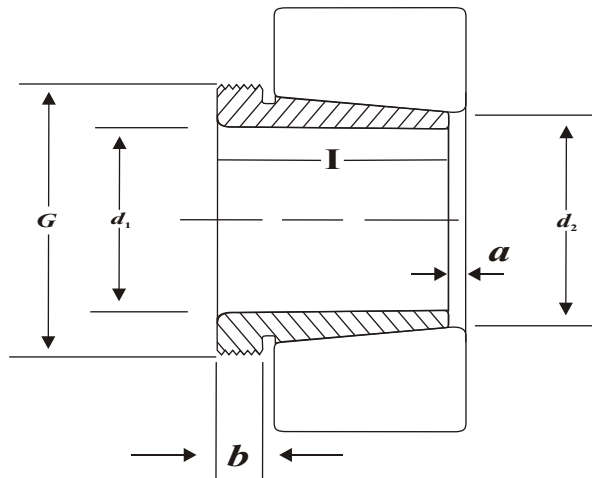


## AH 31

TAPER 1:12

AH31	d <sub>1</sub> mm	d <sub>2</sub> mm	L mm	a mm	G mm	b mm	Suitable Withdrawal Nut No.	Weight Kg.
AHX 3120	95	100	64	4	M 110 x 2	11	KM 22	0.650
AHX 3122	105	110	68	4	M 120 x 2	11	KM 24	0.760
AHX 3124	115	120	75	4	M 130 x 2	12	KM 26	0.950
AHX 3126	125	130	78	4	M 140 x 2	12	KM 28	1.080
AHX 3128	135	140	83	5	M 150 x 2	14	KM 30	1.280
AHX 3130	145	150	96	5	M 165 x 3	15	KM 33	1.790
AHX 3132	150	160	103	5	M 180 x 3	16	KM 36	3.210
AH 3134	160	170	104	5	M 190 x 3	16	KM 38	3.400
AH 3136	170	180	116	6	M 200 x 3	19	KM 40	4.220
AH 3138	180	190	125	6	M 210 x 4	20	HM 42 T	4.890
AH 3140	190	200	134	6	M 220 x 4	21	HM 44 T	5.490
AH 3144	200	220	145	6	M 240 x 4	23	HM 48 T	10.400
AH 3148	220	240	154	7	M 260 x 4	25	HM 52 T	12.000
AH 3152	240	260	172	7	M 290 x 4	26	HM 58 T	16.200
AH 3156	260	280	175	8	M 310 x 5	28	HM 62 T	17.500
AH 3160	280	300	192	8	M 330 x 5	30	HM 66 T	20.800
AH 3164	300	320	209	8	M 350 x 5	31	HM 70 T	24.500
AH 3168	320	340	225	9	M 370 x 5	33	HM 74 T	29.000
AH 3172	340	360	229	9	M 400 x 5	35	HM 3180	33.000
AH 3176	360	380	232	10	M 420 x 5	36	HM 3184	35.700
AH 3180	380	400	240	10	M 440 x 5	38	HM 3188	39.500

# Withdrawal Sleeves

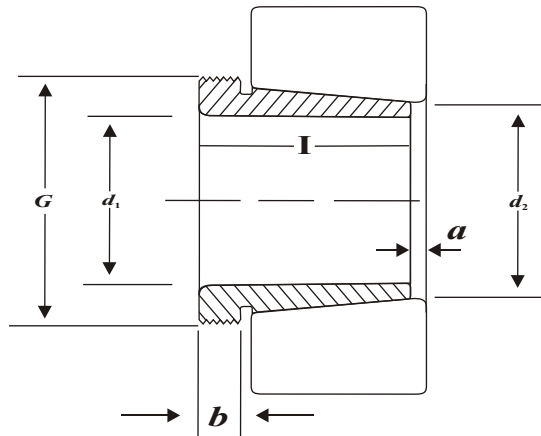


## AH 32

TAPER 1:12

AH32	d <sub>1</sub> mm	d <sub>2</sub> mm	L mm	a mm	G mm	b mm	Suitable Withdrawal Nut No.	Weight Kg.
AHX 3218	85	90	63	4	M 100 x 2	10	KM 20	0.576
AHX 3220	95	100	73	4	M 110 x 2	11	KM 22	0.767
AHX 3222	105	110	82	4	M 125 x 2	11	KM 25	1.040
AHX 3224	115	120	90	4	M 135 x 2	13	KM 27	1.300
AHX 3226	125	130	98	4	M 145 x 2	15	KM 29	1.580
AHX 3228	135	140	104	5	M 155 x 3	15	KM 31	1.840
AHX 3230	145	150	114	5	M 165 x 3	17	KM 33	2.220
AHX 3232	150	160	124	6	M 180 x 3	20	KM 36	4.080
AH 3234	160	170	134	6	M 190 x 3	24	KM 38	4.800
AH 3236	170	180	140	6	M 200 x 3	24	KM 40	5.320
AH 3238	180	190	145	7	M 210 x 4	25	HM 42 T	5.900
AH 3240	190	200	153	7	M 220 x 4	25	HM 44 T	6.680
AH 3260	280	300	228	8	M 330 x 5	34	HM 66 T	26.000
AH 3264	300	320	246	8	M 350 x 5	36	HM 70 T	30.600
AH 3268	320	340	264	9	M 370 x 5	38	HM 74 T	35.800
AH 3272	340	360	274	9	M 400 x 5	40	HN 3180	41.600
AH 3276	360	380	284	10	M 420 x 5	42	HN 3184	46.300
AH 3280	380	410	302	10	M 440 x 5	44	HN 3188	52.500

## Withdrawal Sleeves



### AH 240

TAPER 1:30

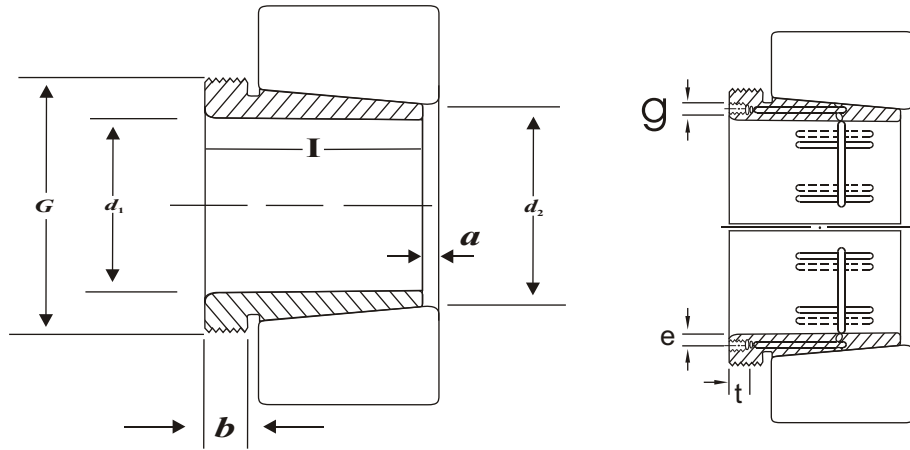
AH 240	d <sub>1</sub> mm	d <sub>2</sub> mm	L mm	a mm	G mm	b mm	Suitable Withdrawal Nut No.	Weight Kg.
AH 24024	115	120	73	9	M 125 x 2	13	KM 25	0.650
AH 24026	125	130	83	10	M 135 x 2	14	KM 27	0.840
AH 24028	135	140	83	10	M 145 x 2	14	KM 29	0.910
AH 24030	145	150	90	11	M 155 x 3	15	KM 31	1.040
AH 24032	150	160	95	11	M 170 x 3	15	KM 34	2.330
AH 24034	160	170	106	11	M 180 x 3	16	KM 36	2.800
AH 24036	170	180	116	11	M 190 x 3	16	KM 38	3.100
AH 24038	180	190	118	13	M 200 x 3	18	KM 40	3.500
AH 24040	190	200	127	13	Tr 210 x 4	18	HM 42 T	3.930
AH 24044	200	220	138	14	Tr 230 x 4	20	HM 46 T	8.250
AH 24048	220	240	138	15	Tr 250 x 4	20	HM 50 T	9.000
AH 24052	240	260	162	16	Tr 270 x 4	22	HM 54 T	11.800
AH 24056	260	280	162	17	Tr 290 x 4	22	HM 58 T	12.800
AH 24060	280	300	184	18	Tr 310 x 5	24	HM 62 T	15.500
AH 24064	300	320	184	18	Tr 330 x 5	24	HM 66 T	16.600

### AH 241

AH 24122	105	110	82	9	M 155 x 2	13	KM 23	0.730
AH 24124	115	120	93	9	M 130 x 2	13	KM 26	1.000
AH 24126	125	130	94	10	M 140 x 2	14	KM 28	1.110
AH 24128	135	140	99	10	M 150 x 2	14	KM 30	1.250
AH 24130	145	150	115	11	M 160 x 3	15	KM 32	1.560
AH 24132	150	160	124	11	M 170 x 3	15	KM 34	3.000
AH 24134	160	170	125	11	M 180 x 3	16	KM 36	3.210
AH 24136	170	180	134	11	M 190 x 3	16	KM 38	3.680
AH 24138	180	190	146	13	Tr 200 x 3	18	KM 40	4.280
AH 24140	190	200	158	13	Tr 210 x 4	18	HM 42 T	5.100
AH 24144	200	220	170	14	Tr 230 x 4	20	HM 46 T	10.200
AH 24148	220	240	180	15	Tr 260 x 4	20	HM 52 T	12.500
AH 24152	240	260	202	16	Tr 280 x 4	22	HM 56 T	15.400
AH 24156	260	280	202	17	Tr 300 x 4	22	HM 3160	16.300
AH 24158	280	300	224	18	Tr 320 x 5	24	HM 3164	19.500



# Hydraulic Withdrawal Sleeves



## AOH 30

TAPER 1:12

AOH 30	$d_1$ mm	$d_2$ mm	I mm	a mm	G mm	b mm	g mm	e mm	t mm	Suitable Withdrawal Nut No.	Weight Kg.
AOH 3032	150	160	77	5	M 170 x 3	16	M6	4	7	KM 34	2.060
AOH 3034	160	170	85	5	M 180 x 3	17	M6	4	7	KM 36	2.430
AOH 3036	170	180	92	6	M 190 x 3	17	M6	4	7	KM 38	2.810
AOH 3038	180	190	102	6	Tr 205 x 4	18	M6	4	7	HML 41 T	3.320
AOH 3040	190	200	111	6	Tr 215 x 4	19	M6	4	7	HML 43 T	3.800
AOH 3044	200	220	116	6	Tr 235 x 4	20	G 1/8	7.5	12	HML 47 T	7.400
AOH 3048	220	240	128	7	Tr 260 x 4	21	G1/4	9	15	HM 52 T	8.750
AOH 3052	240	260	131	7	Tr 280 x 4	23	G1/4	9	15	HM 56 T	10.700
AOH 3056	260	280	140	8	Tr 300 x 4	24	G1/4	9	15	HM 3060	12.000

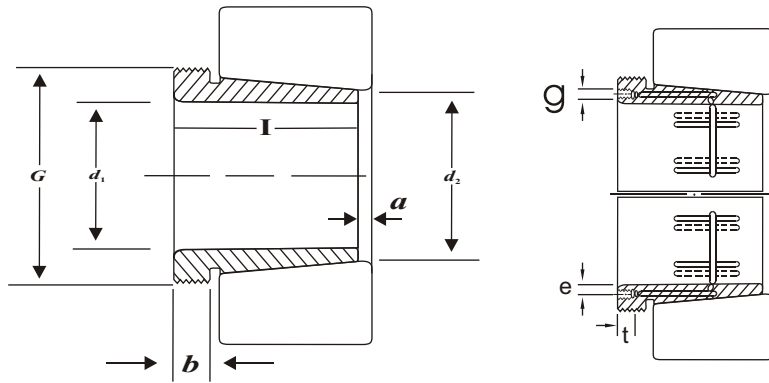
## AOH 23

AOH 2332	150	160	146	6	M 180 x 3	24	M6	4.5	7	KM 36	4.720
AOH 2334	160	170	154	6	M 190 x 3	24	M6	4.5	7	KM 38	5.250
AOH 2336	170	180	160	6	M 200 x 3	26	M6	4.5	7	KM 40	5.830
AOH 2338	180	190	160	7	Tr 210 x 4	26	M6	4.5	7	HM 42 T	6.630
AOH 2340	190	200	170	7	Tr 220 x 4	30	M6	4.5	7	HM 44 T	7.540
AOH 2344	200	220	181	8	Tr 240 x 4	30	G 1/4	9.0	15	HM 48 T	13.500
AOH 2348	220	240	189	8	Tr 260 x 4	30	G 1/4	9.0	15	HM 52 T	15.500
AOH 2352	240	260	205	8	Tr 290 x 4	30	G 1/4	10.0	15	HM 58 T	19.600
AOH 2356	260	280	212	8	Tr 310 x 5	30	G 1/4	11.0	15	HM 62 T	21.600

\* M means metric thread.  
\* Tr means trapezoid thread.



# Hydraulic Withdrawal Sleeves



## AOH 31

TAPER 1:12

AOH 31	d <sub>1</sub> mm	d <sub>2</sub> mm	L mm	a mm	G mm	b mm	g mm	e mm	t mm	Suitable Withdrawal Nut No.	Weight Kg.
AOH 3132	150	160	103	5	M 180 x 3	16	M6	4.5	7	KM 36	3.210
AOH 3134	160	170	104	5	M 190 x 3	16	M6	4.5	7	KM 38	3.400
AOH 3136	170	180	116	6	Tr 200 x 3	19	M6	4.5	7	KM 40	4.220
AOH 3138	180	190	125	6	Tr 210 x 4	20	M6	4.5	7	HM 42 T	4.890
AOH 3140	190	200	134	6	Tr 220 x 4	21	M6	4.5	7	HM 44 T	5.490
AOH 3144	200	220	145	6	Tr 240 x 4	23	G1/4	9.0	15	HM 48 T	10.400
AOH 3148	220	240	154	7	Tr 260 x 4	25	G1/4	9.0	15	HM 52 T	12.000
AOH 3152	240	260	172	7	Tr 290 x 4	26	G1/4	9.5	15	HM 58 T	16.200
AOH 3156	260	280	175	8	Tr 310 x 4	28	G1/4	9.5	15	HM 62 T	17.500

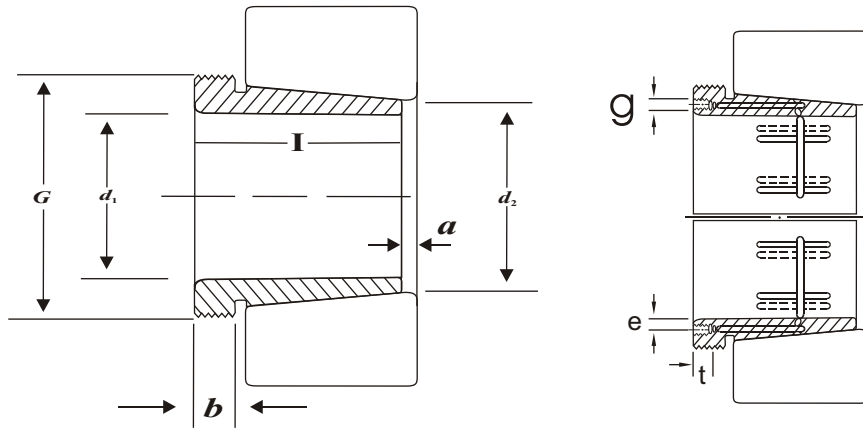
## AOH 32

AOH 3232	150	160	124	6	M 180 x 3	20	M6	4.5	7	KM 36	4.080
AOH 3234	160	170	134	6	M 190 x 3	24	M6	4.5	7	KM 38	4.800
AOH 3236	170	180	140	6	M 200 x 3	24	M6	4.5	7	KM 40	5.320
AOH 3238	180	190	145	7	Tr 210 x 4	25	M6	4.5	7	HM 42 T	5.900
AOH 3240	190	200	153	7	Tr 220 x 4	25	M6	4.5	7	HM 44 T	6.680

\* M means metric thread.  
\* Tr means trapezoid thread.



## Hydraulic Withdrawal Sleeves



### AOH 240

TAPER 1:30

AOH 240	d <sub>1</sub> mm	d <sub>2</sub> mm	L mm	a mm	G mm	b mm	g mm	e mm	t mm	Suitable Withdrawal Nut No.
AOH 24044	200	220	138	14	Tr 230 x 3	20	G1/8	6.5	12	HM 46 T
AOH 24048	220	240	138	15	Tr 250 x 4	20	G1/8	6.5	12	HM 50 T
AOH 24052	240	260	162	16	Tr 270 x 4	22	G1/8	6.5	12	HM 54 T
AOH 24056	260	280	162	17	Tr 290 x 4	22	G1/8	6.5	12	HM 58 T
AOH 24060	280	300	184	18	Tr 310 x 4	24	G1/8	6.5	12	HM 62 T
AOH 24064	300	320	184	18	Tr 330 x 4	24	G1/8	6.5	12	HM 66 T

### AOH 241

AOH 24144	200	220	170	14	Tr 230 x 4	20	G1/8	6.5	12	HM 46 T
AOH 24148	220	240	180	15	M 260 x 3	20	G1/4	9	15	HM 52 T
AOH 24152	240	260	202	16	M 280 x 3	22	G1/4	9	15	HM 56 T
AOH 24156	260	280	202	17	M 300 x 3	22	G1/4	9	15	HM 60 T
AOH 24160	280	300	224	18	Tr 320 x 4	24	G1/4	9	15	HM 64 T
AOH 24164	300	320	242	18	Tr 340 x 4	24	G1/4	9	15	HM 68 T

\* M means metric thread.  
\* Tr means trapezoid thread.