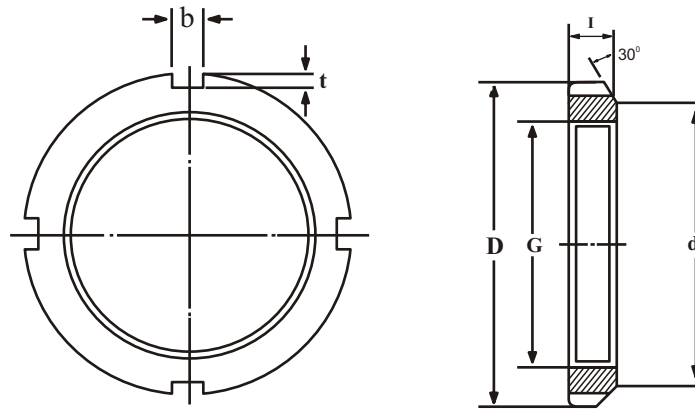


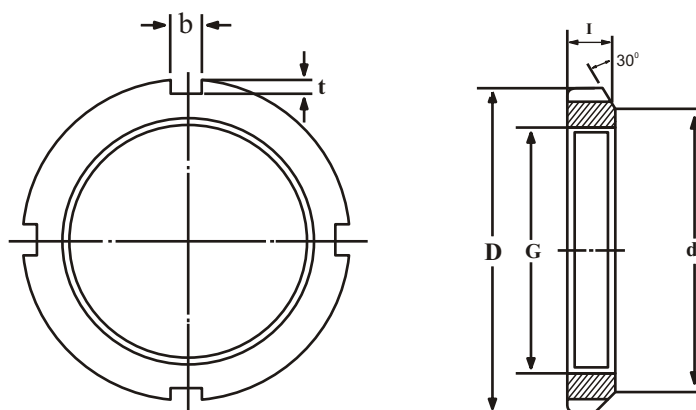
Locknuts



KM

KM	G Thread	D mm	d ₁ mm	I mm	b mm	t mm	Weight Kg
KM 00	M 10 x 0.75	18	13.5	4	3	2	0.005
KM 01	M 12 x 1.0	22	17	4	3	2	0.007
KM 02	M 15 x 1.0	25	21	5	4	2	0.010
KM 03	M 17 x 1.0	28	25	5	4	2	0.013
KM 04	M 20 x 1.0	32	26	6	4	2	0.019
KM 05	M 25 x 1.5	38	32	7	5	2	0.025
KM 06	M 30 x 1.5	45	38	7	5	2	0.043
KM 07	M 35 x 1.5	52	44	8	5	2	0.053
KM 08	M 40 x 1.5	58	50	9	6	2.5	0.085
KM 09	M 45 x 1.5	65	56	10	6	2.5	0.119
KM 10	M 50 x 1.5	70	61	11	6	2.5	0.148
KM 11	M 55 x 2.0	75	67	11	7	3	0.158
KM 12	M 60 x 2.0	80	73	11	7	3	0.174
KM 13	M 65 x 2.0	85	79	12	7	3	0.203
KM 14	M 70 x 2.0	92	85	12	8	3.5	0.242
KM 15	M 75 x 2.0	98	90	13	8	3.5	0.287
KM 16	M 80 x 2.0	105	95	15	8	3.5	0.397
KM 17	M 85 x 2.0	110	102	16	8	3.5	0.451
KM 18	M 90 x 2.0	120	108	16	10	4	0.556
KM 19	M 95 x 2.0	125	113	17	10	4	0.658
KM 20	M100 x 2.0	130	120	18	10	4	0.698
KM 21	M105 x 2.0	140	126	18	12	5	0.845
KM 22	M110 x 2.0	145	133	19	12	5	0.965
KM 23	M115 x 2.0	150	137	19	12	5	1.010
KM 24	M120 x 2.0	155	138	20	12	5	1.080
KM 25	M125 x 2.0	160	148	21	12	5	1.190
KM 26	M130 x 2.0	165	149	21	12	5	1.250
KM 27	M135 x 2.0	175	160	22	14	6	1.550
KM 28	M140 x 2.0	180	160	22	14	6	1.560

Locknuts



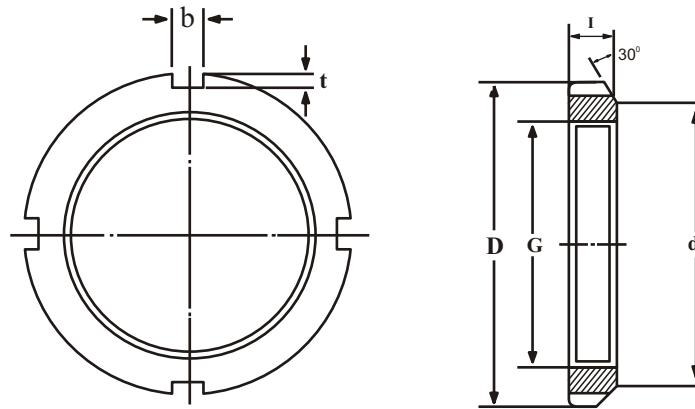
KM

KM	G Thread	D mm	d ₁ mm	I mm	b mm	t mm	Weight Kg.
KM 29	M145 x 2.0	190	171	24	14	6	2.000
KM 30	M150 x 2.0	195	171	24	14	6	2.030
KM 31	M155 x 3.0	200	182	25	16	7	2.210
KM 32	M160 x 3.0	210	182	25	16	7	2.590
KM 33	M165 x 3.0	210	193	26	16	7	2.430
KM 34	M170 x 3.0	220	193	26	16	7	2.800
KM 36	M180 x 3.0	230	203	27	18	8	3.070
KM 38	M190 x 3.0	240	214	28	18	8	3.390
KM 40	M200 x 3.0	250	226	29	18	8	3.690

KML

KML	G Thread	D mm	d ₁ mm	I mm	b mm	t mm	Weight Kg
KML 24	M120 x 2.0	145	135	20	12	5	0.780
KML 26	M130 x 2.0	155	145	21	12	5	0.880
KML 28	M140 x 2.0	165	155	22	12	5	0.990
KML 30	M150 x 2.0	180	170	24	14	5	1.380
KML 32	M160 x 3.0	190	180	25	14	5	1.560
KML 34	M170 x 3.0	200	190	26	16	5	1.720
KML 36	M180 x 3.0	210	200	27	16	5	1.950
KML 38	M190 x 3.0	220	210	28	16	5	2.080
KML 40	M200 x 3.0	240	222	29	18	8	2.980

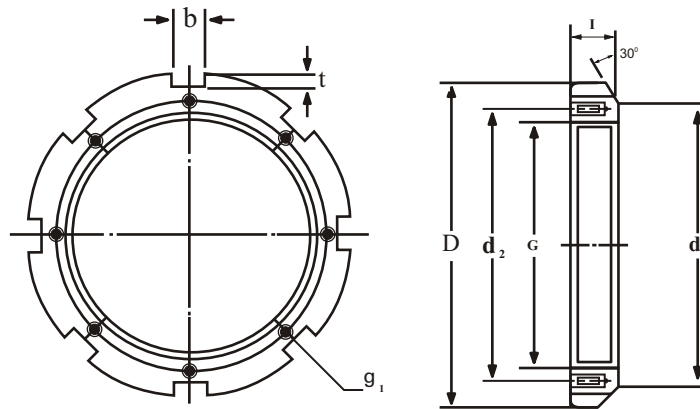
Locknuts



HM

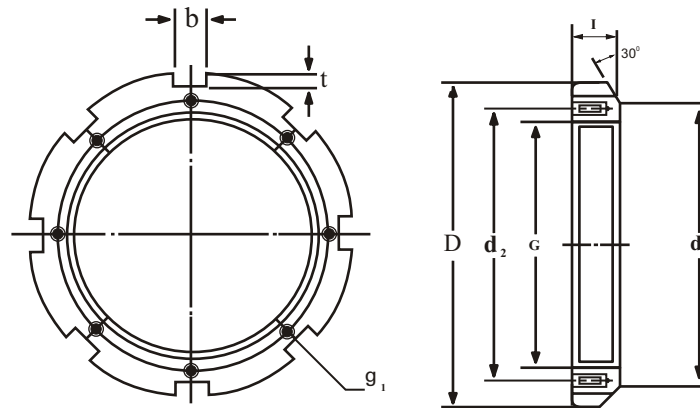
HM	G Thread	D mm	d ₁ mm	I mm	b mm	t mm	Weight Kg
HM 42T	Tr 210 x 4	270	238	30	20	10	4.750
HM 44T	Tr 220 x 4	280	250	32	20	10	5.350
HM 46T	Tr 230 x 4	290	260	34	20	10	5.800
HM 48T	Tr 240 x 4	300	270	34	20	10	6.200
HM 50T	Tr 250 x 4	320	290	36	20	10	7.000
HM 52T	Tr 260 x 4	330	300	36	24	12	8.550
HM 54T	Tr 270 x 4	340	310	38	24	12	9.200
HM 56T	Tr 280 x 4	350	320	38	24	12	10.000
HM 58T	Tr 290 x 4	370	330	40	24	12	11.800
HM 60T	Tr 300 x 4	380	340	40	24	12	12.000
HM 62T	Tr 310 x 5	390	350	42	24	12	13.400
HM 64T	Tr 320 x 5	400	360	42	24	12	13.500
HM 66T	Tr 330 x 5	420	380	52	28	15	20.400
HM 68T	Tr 340 x 5	440	400	55	28	15	24.500
HM 70T	Tr 350 x 5	450	410	55	28	15	25.200
HM 72T	Tr 360 x 5	460	420	58	28	15	27.500
HM 74T	Tr 370 x 5	470	430	58	28	15	28.200
HM 76T	Tr 380 x 5	490	450	60	32	18	33.500
HM 80T	Tr 400 x 5	520	470	62	32	18	40.000
HM 84T	Tr 420 x 5	540	490	70	32	18	46.900
HM 88T	Tr 440 x 5	560	510	70	36	20	48.500
HM 92T	Tr 460 x 5	580	540	75	36	20	55.000
HM 96T	Tr 480 x 5	620	560	75	36	20	67.000
HM 100T	Tr 500 x 5	630	590	80	40	23	69.000
HM 102T	Tr 510 x 6	650	590	80	40	23	75.000
HM 106T	Tr 530 x 6	670	610	80	40	23	78.000
HM 110T	Tr 550 x 6	700	640	80	40	23	92.500

Locknuts



HM 30

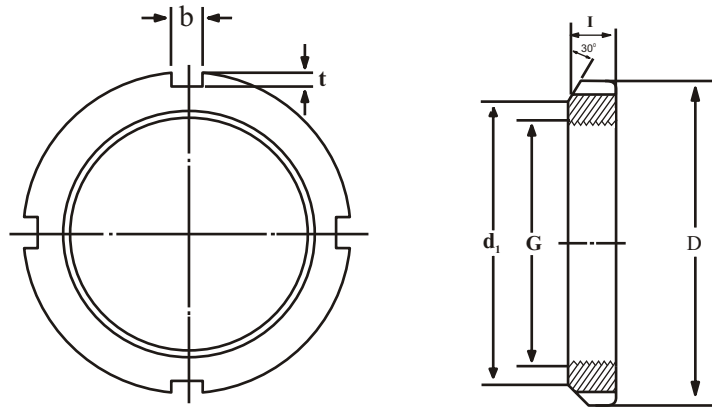
HM 30	G	D	d ₁	b	t	l	d ₂	g ₁	Weight
	Thread	mm	mm	mm	mm	mm	mm		kg
HM 3044	Tr 220 x 4	260	242	20	9	30	229	M 6 x 12	3.090
HM 3048	Tr 240 x 4	290	280	20	10	34	253	M 8 x 16	5.160
HM 3052	Tr 260 x 4	310	290	20	10	34	273	M 8 x 16	5.670
HM 3056	Tr 280 x 4	330	310	24	10	38	293	M 8 x 16	6.780
HM 3060	Tr 300 x 4	360	336	24	12	42	316	M 8 x 16	9.620
HM 3064	Tr 320 x 5	380	356	24	12	42	336	M 8 x 16	9.940
HM 3068	Tr 340 x 5	400	376	24	12	45	356	M 8 x 16	1.700
HM 3072	Tr 360 x 5	420	394	28	13	45	375	M 8 x 16	12.000
HM 3076	Tr 380 x 5	450	422	28	14	48	399	M 10 x 20	14.900
HM 3080	Tr 400 x 5	470	442	28	14	52	419	M10 x 20	16.900
HM 3084	Tr 420 x 5	490	462	32	14	52	439	M10 x 20	17.400
HM 3088	Tr 440 x 5	520	490	32	15	60	462	M12 x 25	26.200
HM 3092	Tr 460 x 5	540	510	32	15	60	483	M12 x 25	29.600
HM 3096	Tr 480 x 5	560	530	36	15	60	503	M12 x 25	28.300
HM 30500	Tr 500 x 5	580	550	36	15	68	523	M12 x 25	33.600



HM 31

HM 31	G	D	d ₁	b	t	I	d ₂	g ₁	Weight
	Thread	mm	mm	mm	mm	mm	mm	Threads	Kg.
HM3144	Tr 220 x 4	280	250	20	10	32	238	M 8x16	5.200
HM3148	Tr 240 x 4	300	270	20	10	34	258	M 8x16	5.950
HM3152	Tr 260 x 4	330	300	24	12	36	281	M 10x20	8.050
HM3156	Tr 280 x 4	350	320	24	12	38	301	M 10x20	9.050
HM3160	Tr 300 x 4	380	340	24	12	40	326	M 10x20	11.800
HM3164	Tr 320 x 5	400	360	24	12	42	345	M 10x20	13.100
HM3168	Tr 340 x 5	440	400	28	15	55	372	M 10x20	23.100
HM3172	Tr 360 x 5	450	420	28	15	58	392	M 12x25	25.100
HM3176	Tr 380 x 5	490	450	32	18	60	414	M 12x25	30.900
HM3180	Tr 400 x 5	520	470	32	18	62	439	M 12x25	39.900
HM3184	Tr 420 x 5	540	490	32	18	70	459	M 16x30	43.500
HM3188	Tr 440 x 5	560	510	36	20	70	477	M 16x30	45.300
HM3192	Tr 460 x 5	580	540	36	20	75	497	M 16x30	50.400
HM3196	Tr 480 x 5	620	560	36	20	75	527	M 16x30	62.200
HM31/500	Tr 500 x 5	630	580	40	23	80	539	M 16x30	63.300

Locknuts

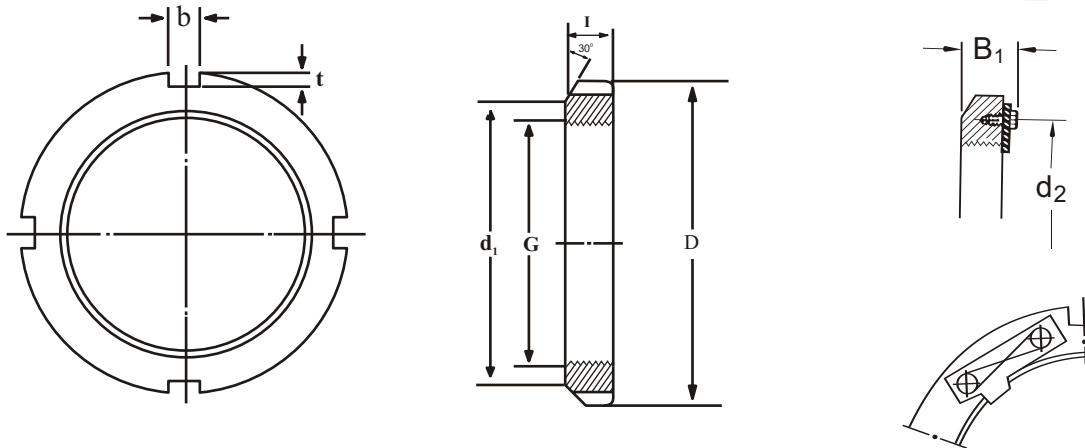


N

N	G	No. Of threads per in	d ₁	D	I	b	t
N 00	0.391	32	0.625	0.755	0.229	0.120	0.073
N 01	0.469	32	0.719	0.880	0.323	0.120	0.073
N 02	0.586	32	0.813	1.005	0.323	0.120	0.104
N 03	0.664	32	0.938	1.130	0.354	0.120	0.104
N 04	0.781	32	1.125	1.380	0.385	0.178	0.104
N 05	0.969	32	1.291	1.568	0.416	0.178	0.104
N 06	1.173	18	1.500	1.755	0.416	0.178	0.104
N 07	1.376	18	1.813	2.068	0.448	0.178	0.104
N 08	1.563	18	2.000	2.255	0.448	0.240	0.104
N 09	1.767	18	2.281	2.536	0.448	0.240	0.104
N 10	1.967	18	2.438	2.693	0.510	0.240	0.104
N 11	2.157	18	2.656	2.974	0.510	0.240	0.135
N 12	2.360	18	2.844	3.161	0.541	0.240	0.135
N 13	2.548	18	3.063	3.380	0.573	0.240	0.135
N 14	2.751	18	3.313	3.630	0.573	0.240	0.135
AN 15	2.933	12	3.563	3.880	0.604	0.360	0.135
AN 16	3.137	12	3.844	4.161	0.604	0.360	0.135
AN 17	3.340	12	4.031	4.411	0.635	0.360	0.166
AN 18	3.527	12	4.281	4.661	0.698	0.360	0.166
AN 19	3.730	12	4.563	4.943	0.729	0.360	0.166
AN 20	3.918	12	4.813	5.193	0.760	0.360	0.166
AN 21	4.122	12	5.000	5.443	0.760	0.485	0.198
AN 22	4.325	12	5.281	5.724	0.791	0.485	0.198
AN 24	4.716	12	5.688	6.130	0.823	0.485	0.198
AN 26	5.106	12	6.188	6.755	0.885	0.610	0.260
AN 28	5.497	12	6.531	7.099	0.948	0.610	0.260
AN 30	5.888	12	7.063	7.693	0.979	0.610	0.291

Threads: American National Form NS Class 3
All Sizes are in inches

Locknuts



N

Lock nuts N 022-N 044

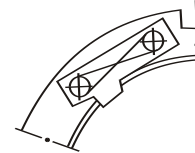
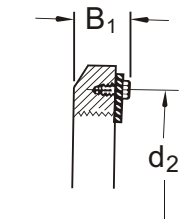
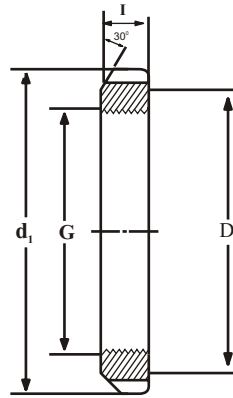
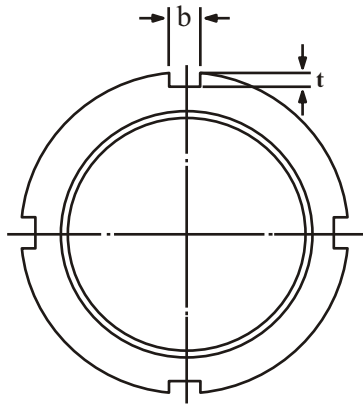
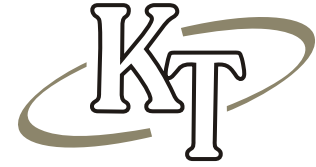
Lock plates P 48-P 800

N	G	No. Of threads per in	d ₁	d ₂	D	I	b	t	B ₁	Hexagon Headed Screw
N 022	4.325	12	4.901	-	5.318	0.791	0.485	0.198	-	-
N 024	4.716	12	5.313	-	5.693	0.823	0.485	0.198	-	-
N 026	5.106	12	5.703	-	6.130	0.885	0.485	0.198	-	-
N 028	5.497	12	6.109	-	6.505	0.948	0.485	0.198	-	-
N 030	5.888	12	6.688	-	7.130	0.979	0.610	0.229	-	-
N 032	6.284	8	7.094	-	7.505	1.041	0.610	0.229	-	-
N 034	6.659	8	7.484	-	7.880	1.073	0.610	0.229	-	-
N 036	7.066	8	7.875	-	8.255	1.104	0.610	0.229	-	-
N 038	7.472	8	8.266	-	8.693	1.135	0.610	0.229	-	-
N 040	7.847	8	8.750	-	9.443	1.198	0.735	0.323	-	-
N 044	8.628	8	9.531	-	10.255	1.260	0.860	0.385	-	-
N 048	9.442	6	10.625	10.423	11.443	1.354	0.860	0.385	1.698	5/16-18x5/8
N 052	10.192	6	11.406	11.298	12.193	1.416	0.860	0.385	1.760	5/16-18x5/8
N 056	11.004	6	12.219	12.110	13.005	1.510	0.980	0.385	1.854	5/16-18x5/8
N 060	11.785	6	13.219	13.110	14.193	1.573	0.980	0.510	1.948	3/8-16x3/4
N 064	12.562	6	14.031	13.860	15.005	1.666	0.980	0.510	2.041	3/8-16x3/4
N 068	13.339	5	14.813	14.735	15.755	1.791	0.980	0.510	2.166	3/8-16x3/4
N 072	14.170	5	15.500	15.485	16.505	1.791	1.230	0.510	2.166	3/8-16x3/4
N 076	14.957	5	16.625	16.485	17.755	1.916	1.230	0.604	2.353	1/2-13x7/8
N 080	15.745	5	17.438	17.235	18.505	2.073	1.230	0.604	2.500	1/2-13x7/8
N 084	16.532	5	18.188	18.110	19.318	2.073	1.355	0.604	2.500	1/2-13x7/8

Threads: American National Form NS Class 3 < .64

Threads: Acme Class 3G, General Purpose ≥ .68

Locknuts



N

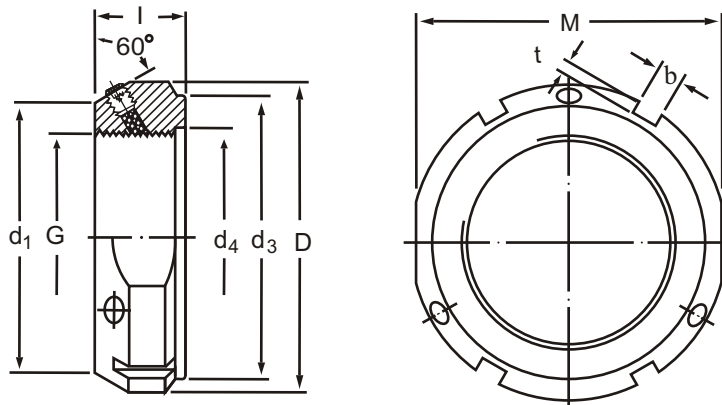
Lock nuts N 048-N 800

Lock plates P 48-P 800

N	G	No. Of threads per in	d ₁	d ₂	D	I	b	t	B ₁	Hexagon Headed Screw
N 088	17.319	5	19.250	19.110	20.505	2.385	1.355	0.604	2.906	5/8-11x1
N 092	18.107	5	20.688	19.985	21.255	2.385	1.355	0.604	2.906	5/8-11x1
N 096	18.894	5	20.750	20.673	22.068	2.385	1.480	0.604	2.937	5/8-11x11/4
N 500	19.682	5	21.688	21.610	22.818	2.703	1.480	0.604	3.250	5/8-11x11/4
N 530	20.867	4	23.250	23.360	24.818	2.703	1.605	0.823	3.250	5/8-11x11/4
N 560	22.048	4	24.000	24.110	25.568	2.953	1.605	0.823	3.500	5/8-11x11/4
N 600	23.623	4	26.000	25.923	27.568	2.953	1.605	0.823	3.500	5/8-11x11/4
N 630	24.804	4	27.125	27.235	28.755	2.953	1.855	0.823	3.500	5/8-11x11/4
N 670	26.379	4	29.125	28.985	30.693	3.140	1.855	0.823	3.687	5/8-11x11/4
N 710	27.961	3	30.688	30.610	32.693	3.578	1.980	1.010	4.125	5/8-11x11/4
N 750	29.536	3	32.313	32.235	34.255	3.578	2.230	1.010	4.156	5/8-11x11/4
N 800	31.504	3	34.250	34.610	36.255	3.578	2.230	1.010	4.156	5/8-11x11/4

Threads: Acme Class 3G, General Purpose $\geq .68$
 Threads: American National Form NS Class 3 $\leq .64$

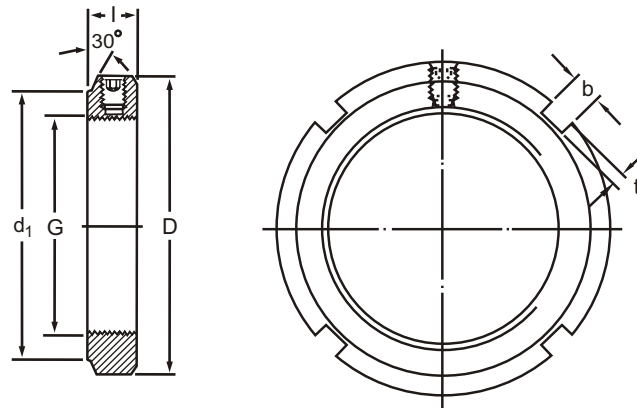
Locknuts



KMT

KMT	G Thread	d ₁ mm	D mm	I mm	b mm	t mm	d ₃ mm	d ₄ mm	M	Grub Screws Size	Tight ening torque max.	Mass
KMT 0	M 10 x 0.75	21	28	14	4	2	23	11	24	M 5	4.5	0.045
KMT 1	M 12 x 1.0	23	30	14	4	2	25	13	27	M 5	4.5	0.050
KMT 2	M 15 x 1.0	26	33	16	4	2	28	16	30	M 5	4.5	0.075
KMT 3	M 17 x 1.0	29	37	18	5	2	33	18	34	M 6	8	0.10
KMT 4	M 20 x 1.0	32	40	18	5	2	35	21	36	M 6	8	0.11
KMT 5	M 25 x 1.5	36	44	20	5	2	39	26	41	M 6	8	0.13
KMT 6	M 30 x 1.5	41	49	20	5	2	44	32	46	M 6	8	0.16
KMT 7	M 35 x 1.5	46	54	22	5	2	49	38	50	M 6	8	0.19
KMT 8	M 40 x 1.5	54	65	22	6	2.5	59	42	60	M 8	18	0.30
KMT 9	M 45 x 1.5	60	70	22	6	2.5	64	48	65	M 8	18	0.33
KMT 10	M 50 x 1.5	64	75	25	7	3	68	52	70	M 8	18	0.40
KMT 11	M 55 x 2.0	74	85	25	7	3	78	58	80	M 8	18	0.54
KMT 12	M 60 x 2.0	78	90	26	8	3.5	82	62	85	M 8	18	0.61
KMT 13	M 65 x 2.0	83	95	28	8	3.5	87	68	90	M 8	18	0.71
KMT 14	M 70 x 2.0	88	100	28	8	3.5	92	72	95	M 8	18	0.75
KMT 15	M 75 x 2.0	93	105	28	8	3.5	97	77	100	M 8	18	0.80
KMT 16	M 80 x 2.0	98	110	32	8	3.5	100	83	-	M 8	18	0.90
KMT 17	M 85 x 2.0	107	120	32	10	4	110	88	-	M 10	35	1.15
KMT 18	M 90 x 2.0	112	125	32	10	4	115	93	-	M 10	35	1.20
KMT 19	M 95 x 2.0	117	130	32	10	4	120	98	-	M 10	35	1.25
KMT 20	M100 x 2.0	122	135	32	10	4	125	103	-	M 10	35	1.30
KMT 22	M110 x 2.0	132	145	32	10	4	134	112	-	M 10	35	1.45
KMT 24	M120 x 2.0	142	155	32	10	4	144	122	-	M 10		1.60
KMT 26	M130 x 2.0	152	165	32	12	5	154	132	-	M 10		1.70
KMT 28	M140 x 2.0	162	175	32	14	6	164	142	-	M 10		1.80
KMT 30	M150 x 2.0	172	185	32	14	6	174	152	-	M 10		1.95
KMT 32	M160 x 3.0	182	195	32	14	6	184	162	-	M 10		2.10
KMT 34	M170 x 3.0	192	205	32	14	6	192	172	-	M 10		2.20
KMT 36	M180 x 3.0	202	215	32	16	7	204	182	-	M 10		2.30
KMT 38	M190 x 3.0	212	225	32	16	7	214	192	-	M 10		2.40
KMT 40	M200 x 3.0	222	235	32	18	8	224	202	-	M 10		2.50

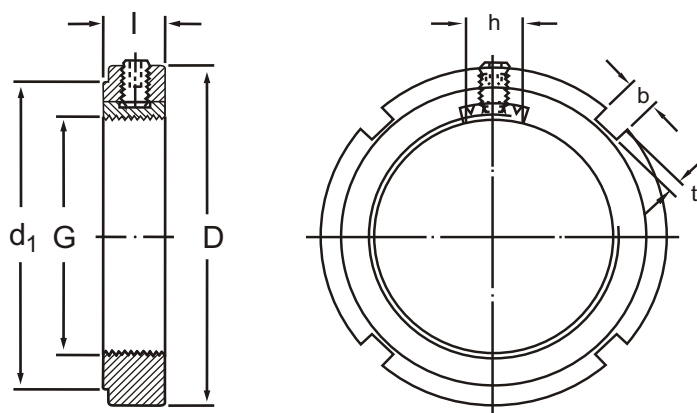
Locknuts



KMF

KMF	G Thread	d_1 mm	D mm	I mm	b mm	t mm	Grub Screws Size mm	Tight- ening torque max	Weight Kg
KMF 0	M 10 x 0.75	14.5	20	9.5	3	2	M 5	4	0.014
KMF 1	M 12 x 1.0	17	22	9.5	3	2	M 5	4	0.019
KMF 2	M 15 x 1.0	21	25	9.5	4	2	M 5	4	0.023
KMF 3	M 17 x 1.0	24	28	9.5	4	2	M 5	4	0.023
KMF 4	M 20 x 1.0	26	32	9.5	4	2	M 5	4	0.032
KMF 5	M 25 x 1.5	32	38	9.5	5	2	M 5	4	0.038
KMF 6	M 30 x 1.5	38	45	9.5	5	2	M 5	4	0.052
KMF 7	M 35 x 1.5	44	52	10	5	2	M 5	4	0.073
KMF 8	M 40 x 1.5	50	58	11.5	6	2.5	M 6	8	0.10
KMF 9	M 45 x 1.5	56	65	11.5	6	2.5	M 6	8	0.13
KMF 10	M 50 x 1.5	61	70	12.5	6	2.5	M 6	8	0.16
KMF 11	M 55 x 2.0	67	75	12.5	7	3	M 6	8	0.17
KMF 12	M 60 x 2.0	73	80	12.5	7	3	M 6	8	0.18
KMF 13	M 65 x 2.0	79	85	12.5	7	3	M 6	8	0.20
KMF 14	M 70 x 2.0	85	92	12.5	8	3.5	M 6	8	0.25
KMF 15	M 75 x 2.0	90	98	13	8	3.5	M 6	8	0.27

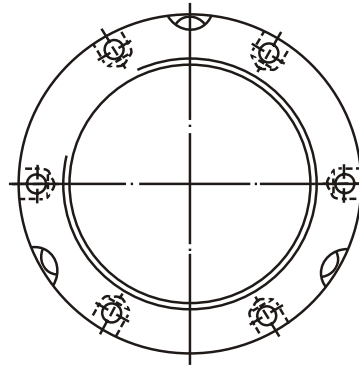
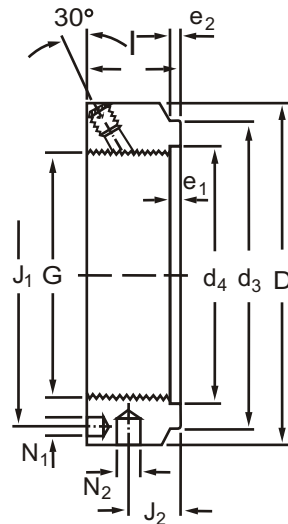
Locknuts



KMK

KMK	G Thread	d ₁ mm	D mm	I mm	b mm	t mm	h mm	Grub Screws Size mm	Tight- ening torque max
KMK 0	M 10 x 0.75	15	20	8	3	2	4	M 4	2
KMK 1	M 12 x 1.0	17	22	8	3	2	4	M 4	2
KMK 2	M 15 x 1.0	21	25	8	4	2	4	M 4	2
KMK 3	M 17 x 1.0	24	28	8	4	2	4	M 4	2
KMK 4	M 20 x 1.0	26	32	8	4	2	4	M 4	2
KMK 5	M 25 x 1.5	33	38	9	5	2	10	M 5	4
KMK 6	M 30 x 1.5	40	45	9	5	2	10	M 5	4
KMK 7	M 35 x 1.5	47	52	9	5	2	10	M 5	4
KMK 8	M 40 x 1.5	52	58	11	6	2.5	12	M 6	8
KMK 9	M 45 x 1.5	59	65	11	6	2.5	12	M 6	8
KMK 10	M 50 x 1.5	64	70	13	6	2.5	12	M 6	8
KMK 11	M 55 x 2.0	68	75	13	7	3	12	M 8	18
KMK 12	M 60 x 2.0	73	80	13	7	3	12	M 8	18
KMK 13	M 65 x 2.0	78	85	14	7	3	14	M 8	18
KMK 14	M 70 x 2.0	84	92	14	8	3.5	14	M 8	18
KMK 15	M 75 x 2.0	90	98	14	8	3.5	14	M 8	18
KMK 16	M 80 x 2.0	97	105	18	8	3.5	16	M 8	18
KMK 17	M 85 x 2.0	102	110	18	8	3.5	16	M 10	35
KMK 18	M 90 x 2.0	111	120	18	10	4	16	M 10	35
KMK 19	M 95 x 2.0	116	125	20	10	4	16	M 10	35
KMK 20	M 100 x 2.0	121	130	20	10	4	16	M 10	35

Locknuts



KMTA

KMTA	G Thread	D mm	I mm	d ₃ mm	d ₄ mm	J ₁ mm	J ₂ mm	N ₁ mm	N ₂ mm	e ₁ mm	e ₂ mm	Grub Screws Size
KMTA 5	M 25 x 1.5	42	20	35	26	32.5	11	4.3	4	2	2	M 6
KMTA 6	M 30 x 1.5	48	20	40	32	40.5	11	4.3	5	2	2	M 6
KMTA 7	M 35 x 1.5	53	20	47	38	45.5	11	4.3	5	3	3	M6
KMTA 8	M 40 x 1.5	58	22	52	42	50.5	12	4.3	5	3	3	M 6
KMTA 9	M 45 x 1.5	68	22	58	48	58	12	4.3	6	3	3	M 6
KMTA 10	M 50 x 1.5	70	24	63	52	61.5	13	4.3	6	4	4	M 6
KMTA 11	M 55 x 1.5	75	24	70	58	66.5	13	4.3	6	4	4	M 6
KMTA 12	M 60 x 1.5	84	24	75	62	74.5	13	5.3	6	4	4	M 6
KMTA 13	M 65 x 1.5	88	25	80	68	78.5	13	5.3	6	4	4	M 6
KMTA 14	M 70 x 1.5	95	26	86	72	85	14	5.3	8	4	4	M 8
KMTA 15	M 75 x 1.5	100	26	91	77	88	13	6.4	8	4	4	M 8
KMTA 16	M 80 x 2	110	30	97	83	95	16	6.4	8	5	4	M 8
KMTA 17	M 85 x 2	115	32	102	88	100	17	6.4	8	5	4	M 10
KMTA 18	M 90 x 2	120	32	110	93	108	17	6.4	8	5	5	M 10
KMTA 19	M 95 x 2	125	32	114	98	113	17	6.4	8	5	5	M 10
KMTA 20	M 100x 2	130	32	120	103	118	17.5	6.4	8	5	5	M 10
KMTA 22	M 110x 2	140	32	132	112	128	17	6.4	8	5	5	M 10
KMTA 24	M 120x 2	155	32	142	122	140	17	6.4	8	5	5	M 10
KMTA 26	M 130x 3	165	32	156	132	153	17	6.4	8	5	5	M 10
KMTA 28	M 140x 3	180	32	166	142	165	17	6.4	10	5	5	M 10
KMTA 30	M 150x 3	190	32	180	152	175	17	6.4	10	5	5	M 10
KMTA 32	M 160x 3	205	32	190	162	185	17	8.4	10	5	5	M 10
KMTA 34	M 170x 3	215	32	205	172	195	17	8.4	10	5	5	M 10
KMTA 36	M 180x 3	230	32	215	182	210	17	8.4	10	5	5	M 10
KMTA 38	M 190x 3	240	32	225	192	224	17	8.4	10	5	5	M 10
KMTA 40	M 200x 3	245	32	237	202	229	17	8.4	10	5	5	M 10